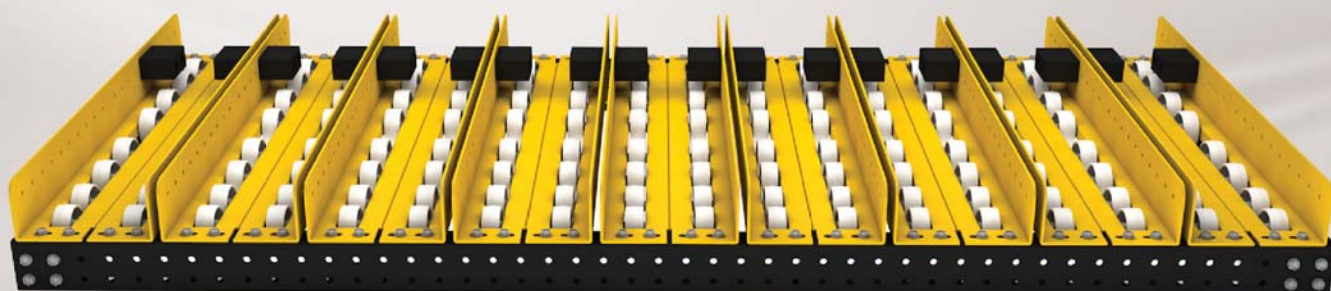
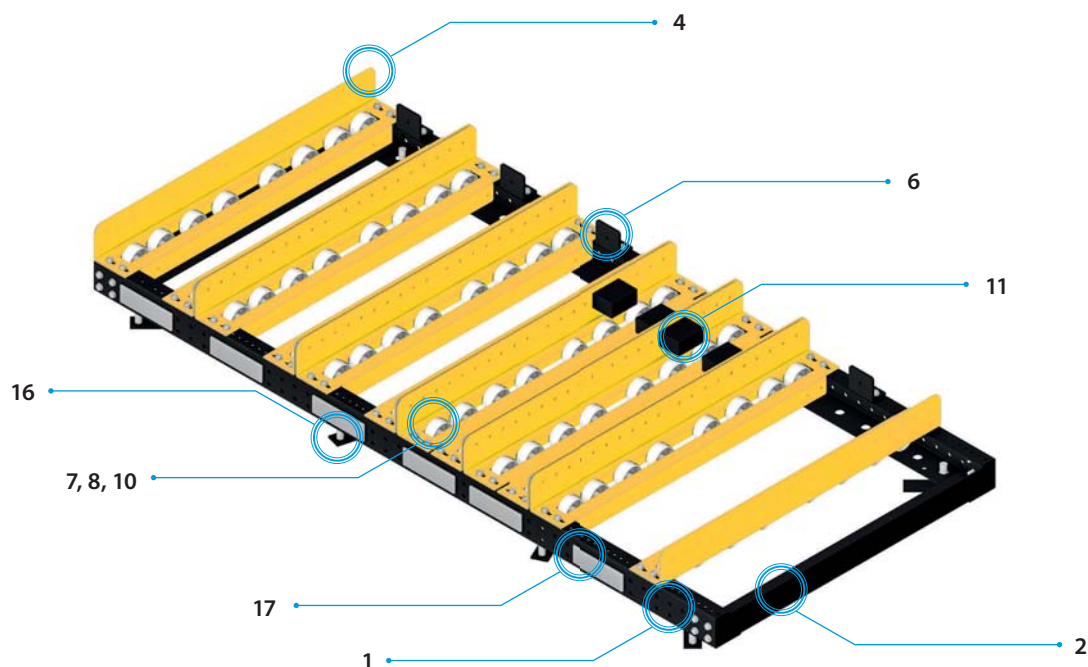


MODUŁOWY STOJAK NA BATERIE



INSTRUKCAJ MONTAŻU

INSTRUKCJA MONTAŻU



| Nr. | Part description |
|-----|---|
| 1 | Front Beam 2400 mm |
| 2 | End/Join Beam 1240 mm |
| 3 | End/Join Beam 1070 mm |
| 4 | Roller Beam 1250 mm |
| 5 | Roller Beam 1080 mm |
| 6 | Back Stop Angle Bracket |
| 7 | Axle Pin and retainig clip |
| 8 | Techbolt |
| 9 | Foot Adjustable Long 235 - 330 mm (Pack of 8) |
| 10 | Roller - PP Diam. 80 mm Shaft 12 mm |
| 11 | Back Stop Side Mounted |
| 12 | Roller Beam 1250 mm c/w 9 x Rollers |
| 13 | Roller Beam 1080 mm c/w 8 x Rollers |
| 14 | Power Plate |
| 15 | Foot Adjustable Medium 158 - 229 mm (Pack of 8) |
| 16 | Foot Adjustable Short 139 - 152 mm (Pack of 8) |
| 17 | Position Label |

INSTRUKCJA MONTAŻU

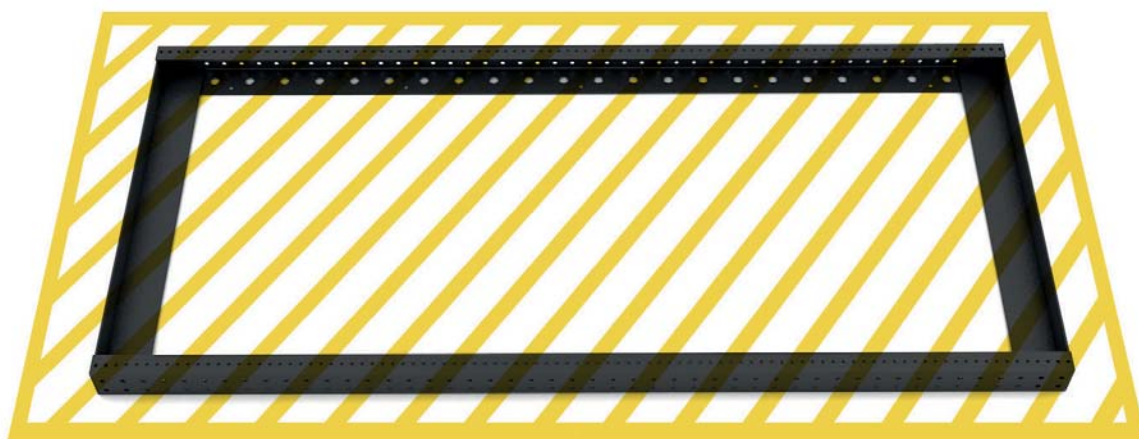
Required tools



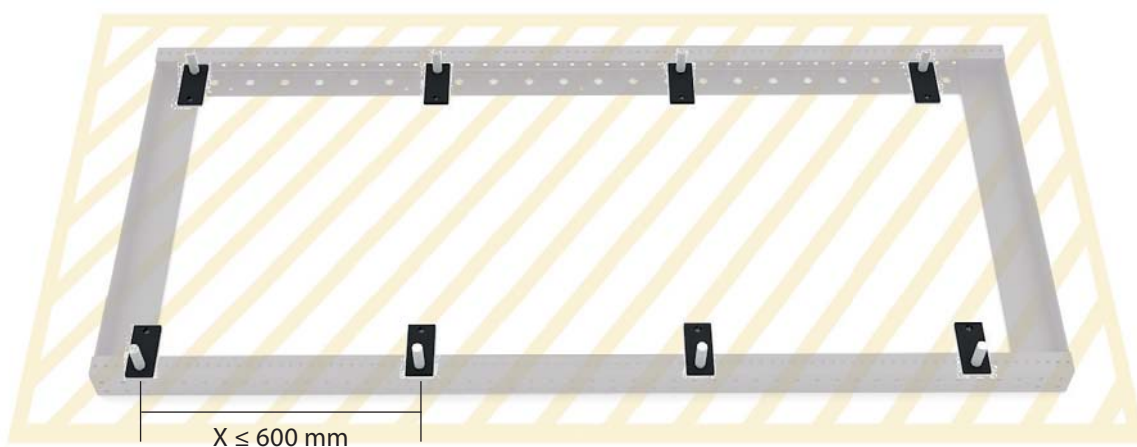
- IMPACT DRIVER
- 17 MM SOCKET
- 35 MM SPANNER
- SPIRIT LEVEL
- TAPE MEASURE

INSTRUKCJA MONTAŻU

STEP 1: Layout the frame in the correct position.

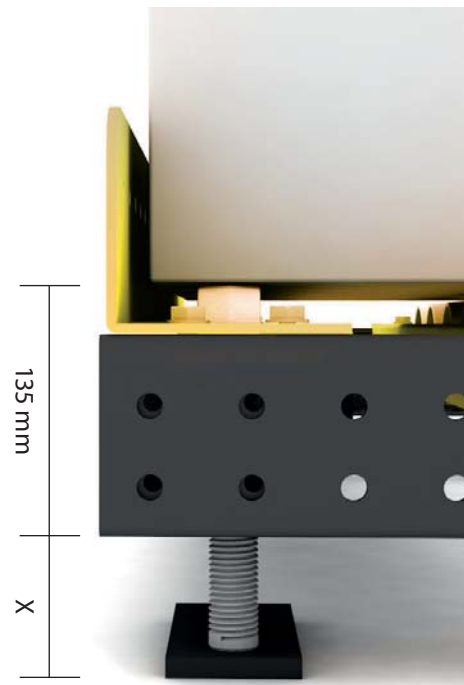
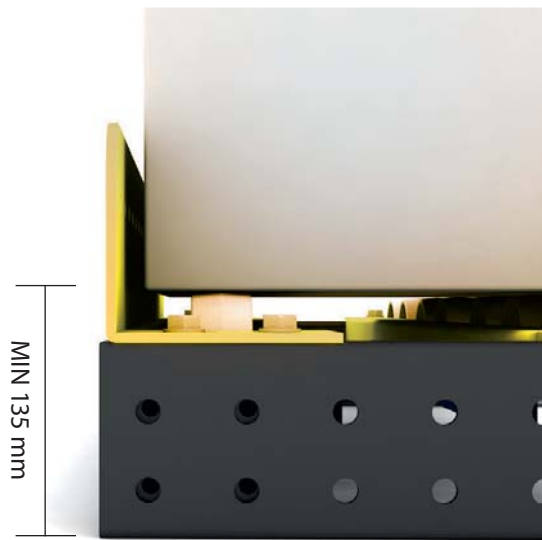


STEP 2: Layout the feet according to the frame.



INSTRUKCJA MONTAŻU

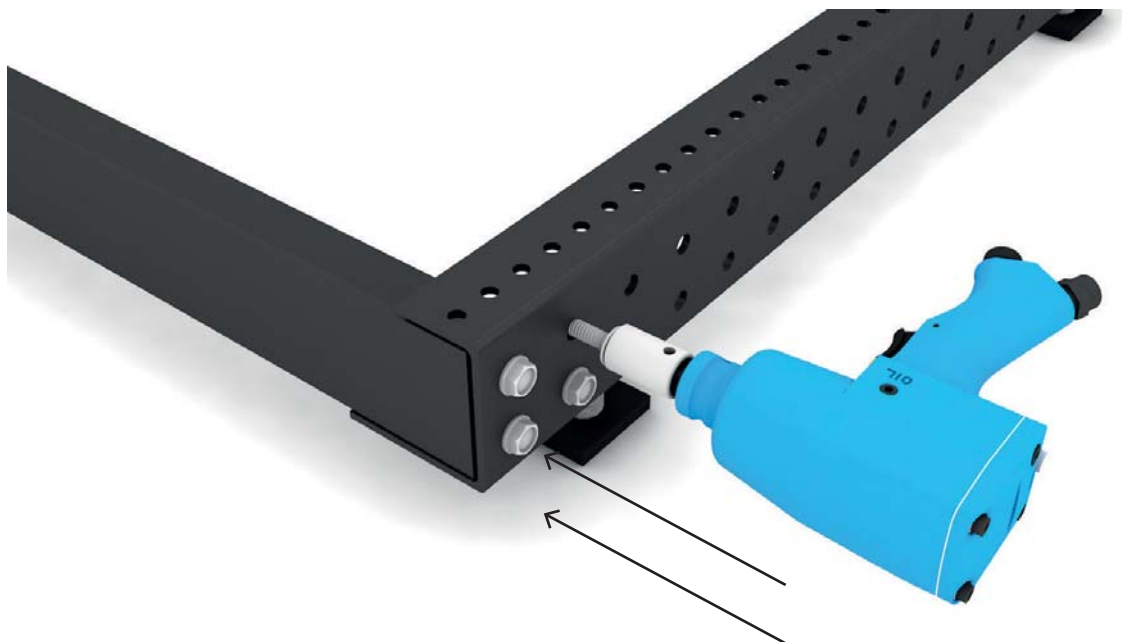
STEP 3: Measure the roll off height required for your truck type.



STEP 4: If feet are required, measure adjust and secure the feet to the frame. Once the feet are attached and in place, slot in the end/join beam.



STEP 5: Secure the end/join beams in place using the tech bolts.

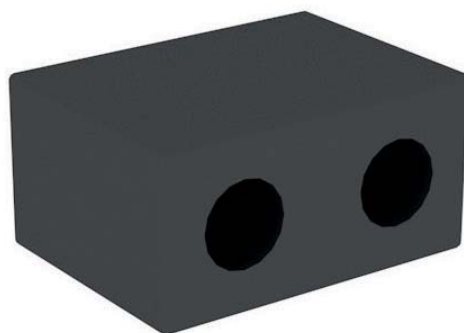
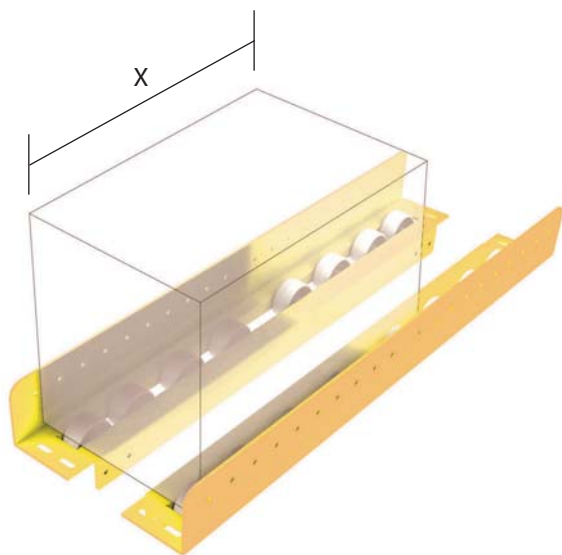


STEP 6: We recommend you secure the feet to the floor.



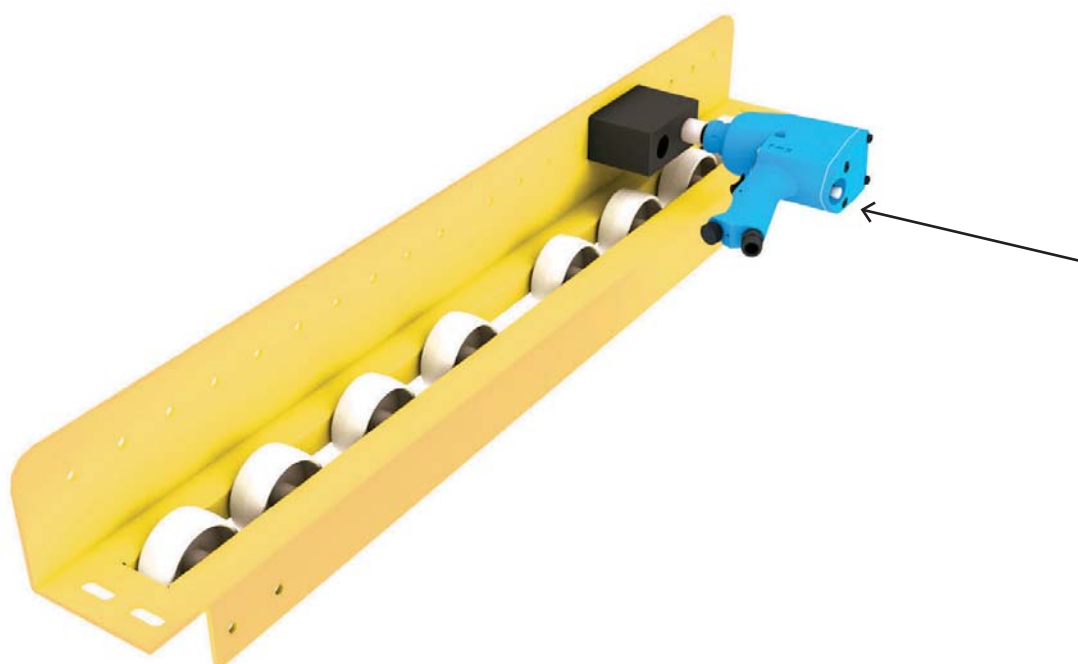
INSTRUKCJA MONTAŻU

STEP 7: Measure the depth of your battery to determine whether back stops or side stops are required for your system.



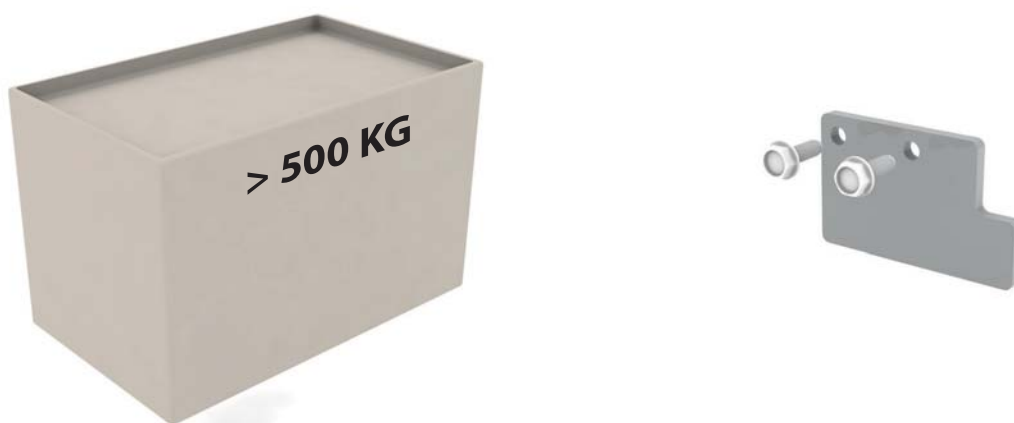
4: $X < 1115 \text{ mm}$
5: $X < 995 \text{ mm}$

STEP 8: Fit any side stops to the required roller beams.

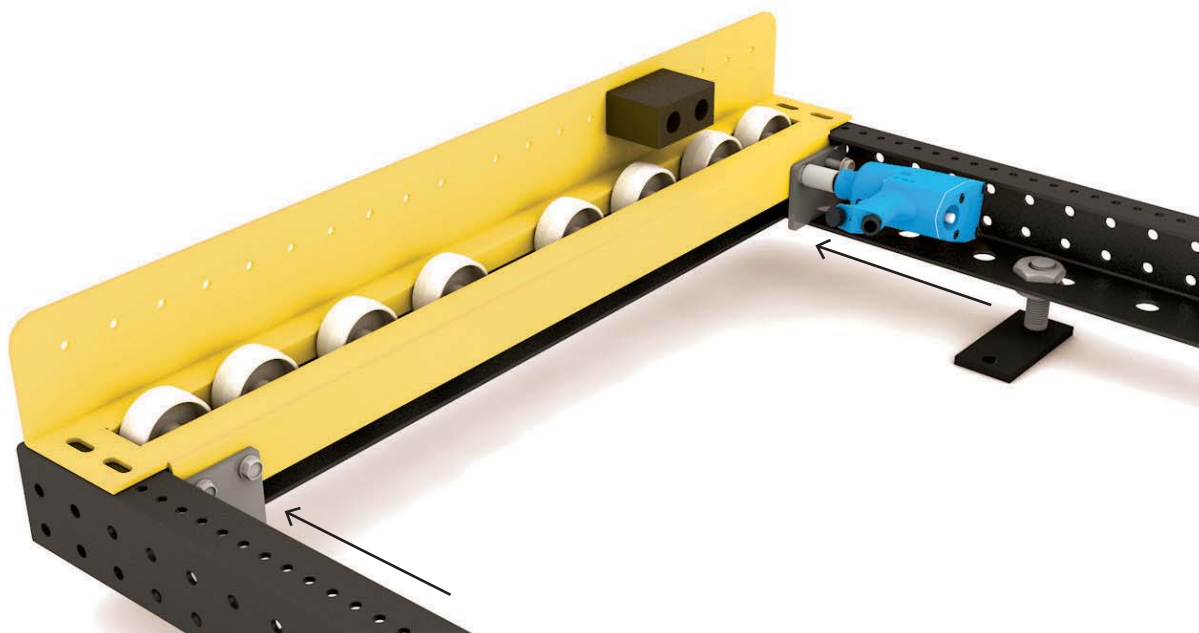


INSTRUKCJA MONTAŻU

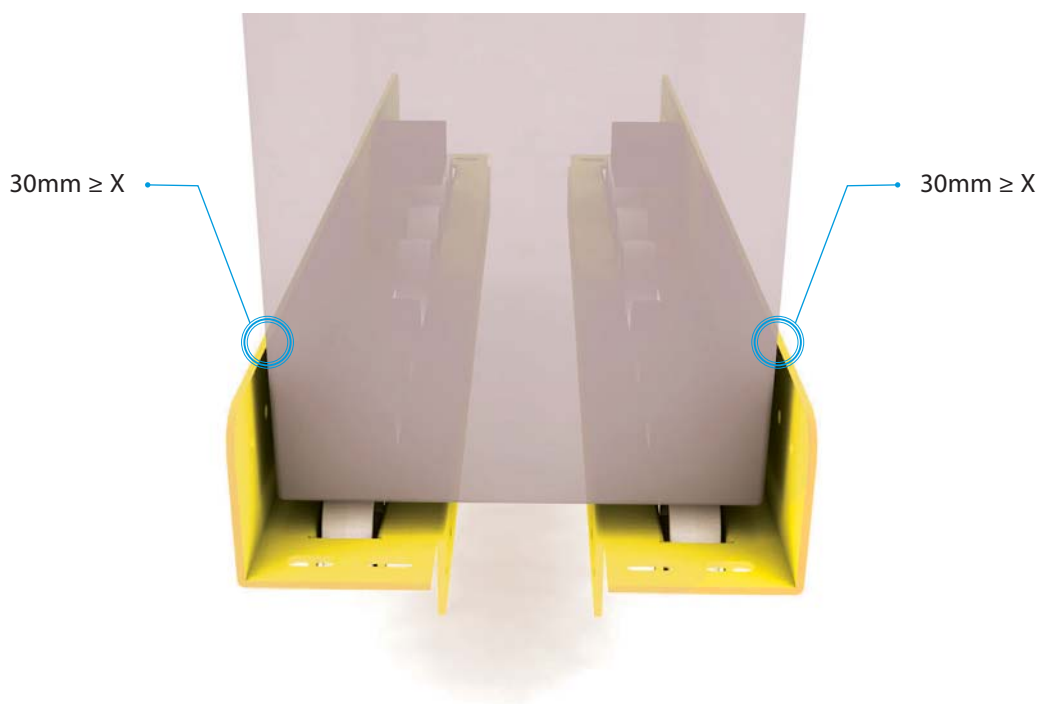
STEP 9: To use the battery rack with batteries over 500 kg then a power plate needs to be fitted to the roller beams.



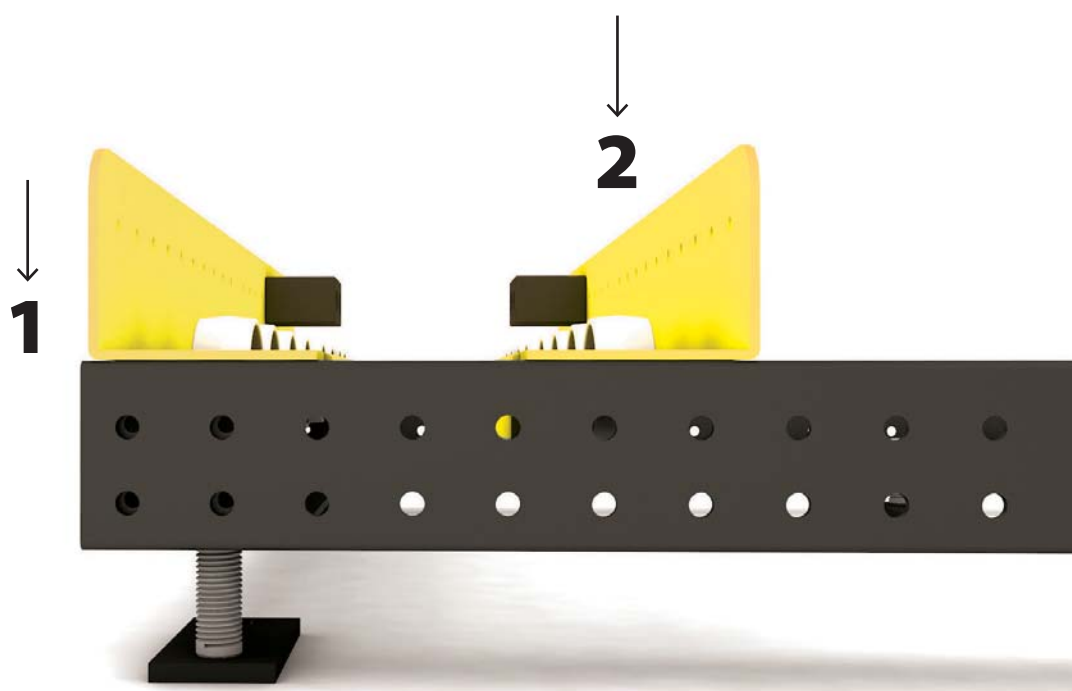
STEP 10: Ensure the powerplates are fitted to both ends of the roller beam while the beams are on the frame.



STEP 11: When positioning the roller beams ensure a maximum distance of 30 mm between the side of the battery and roller beam on each side.



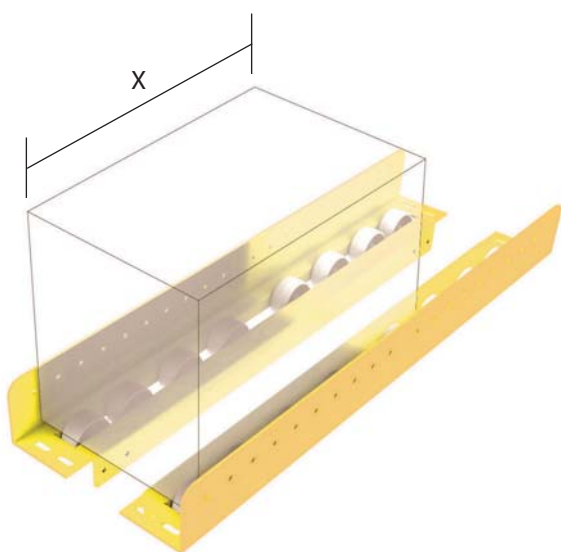
STEP 12: Layout the roller beams starting from the edge of the perimeter frame.



STEP 13: Layout the remaining roller beams into the desired places.

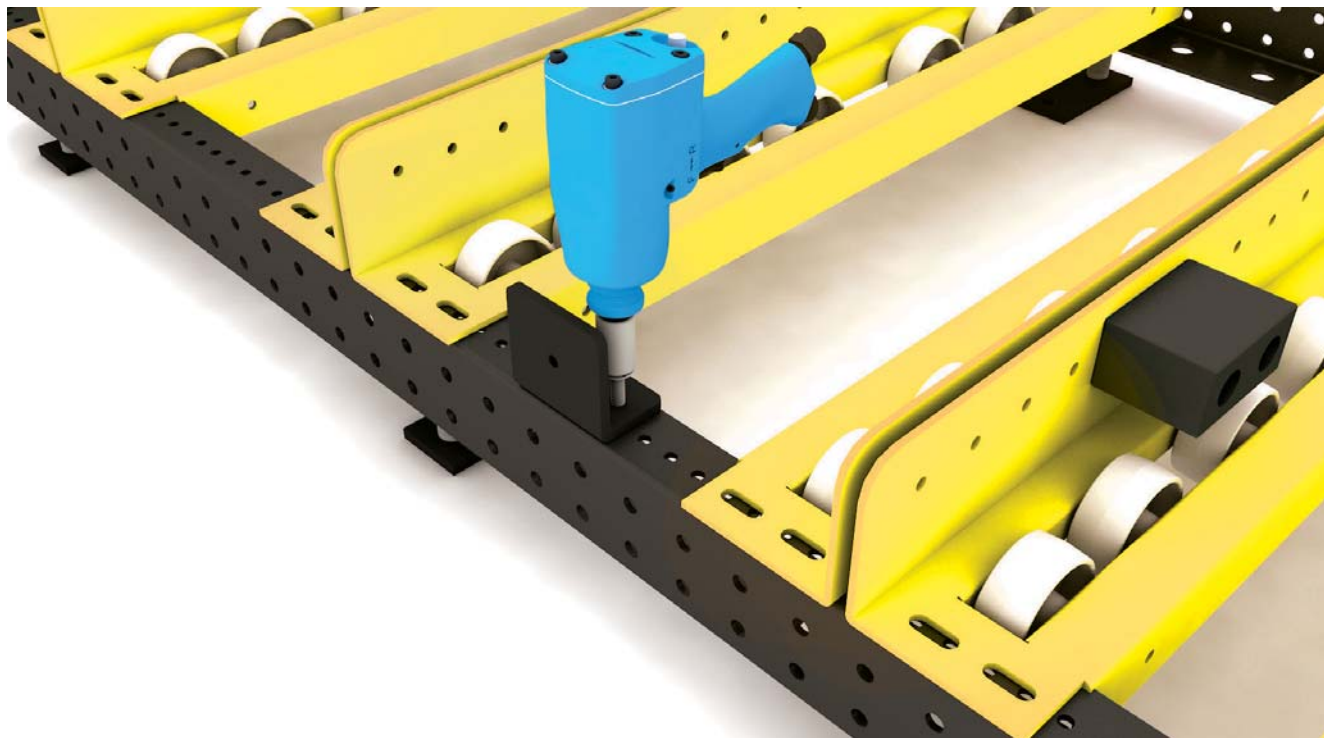


STEP 14: Backstops are required for longer batteries.



4: $X > 995 \text{ mm}$
5: $X > 1115 \text{ mm}$

STEP 15: Fit any required backstops.

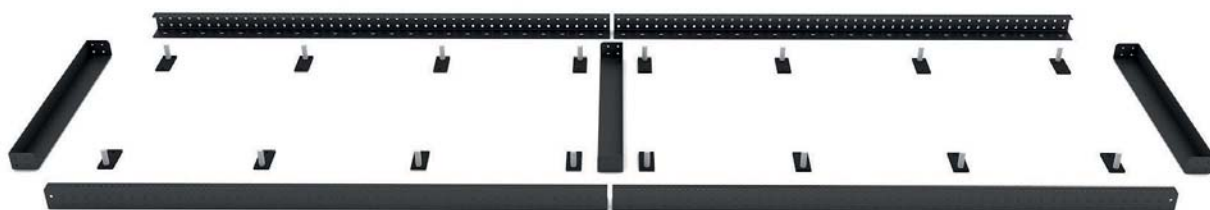


STEP 16: Fix the rest of the beams to the perimeter frame using tech bolts.

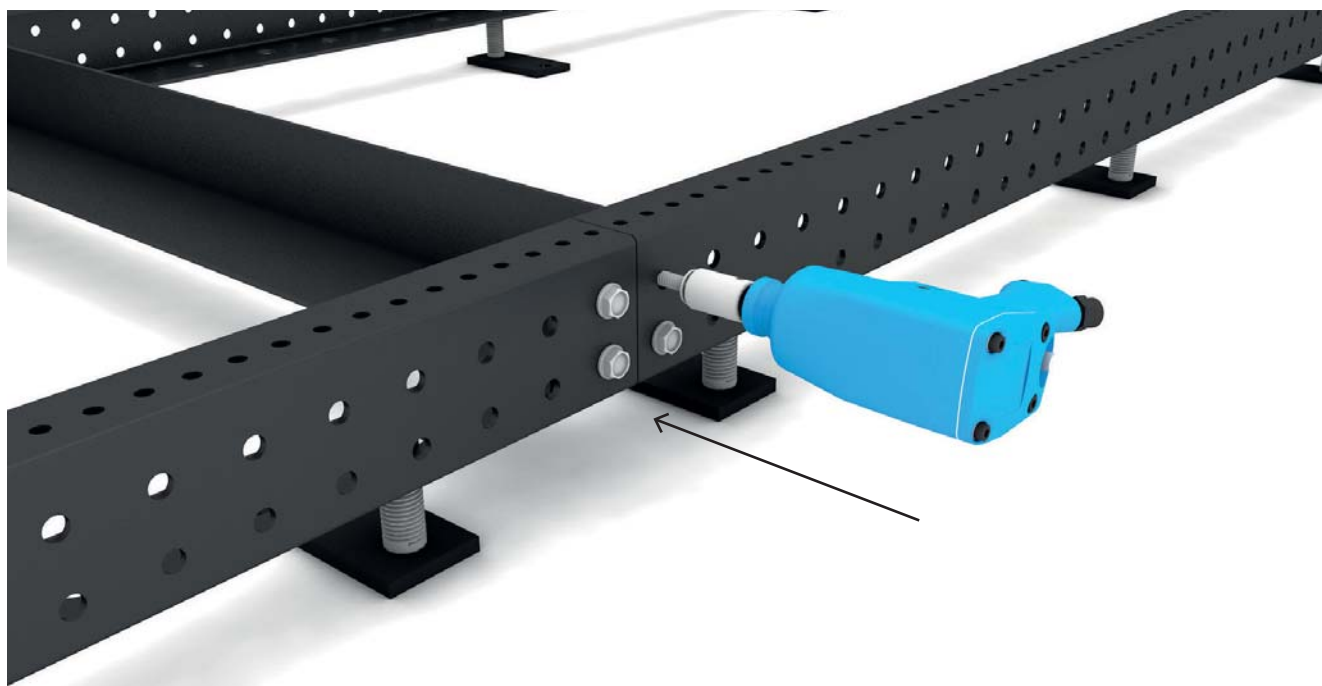


INSTRUKCJA MONTAŻU

STEP 01: When laying out the frame the end beam now becomes a joining beam. Ensure the measurements allow for joining both the front and the back beams together.

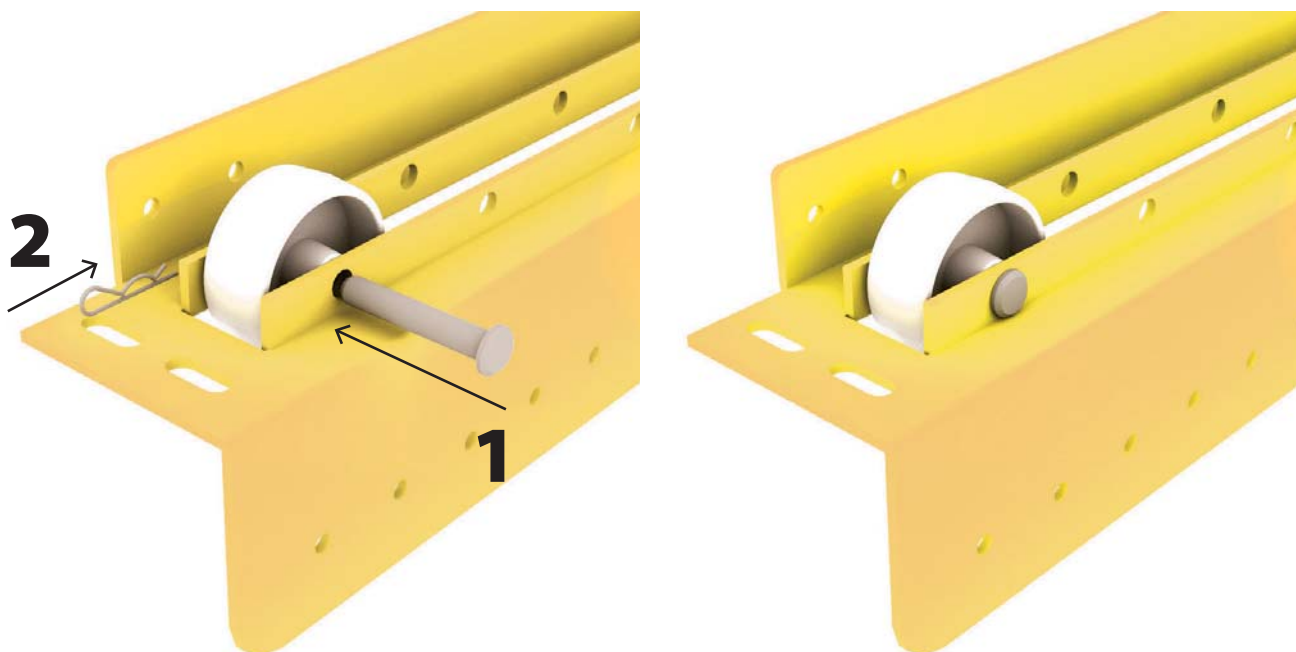


STEP 02: Using 8 bolts (4 each end) secure both sets of front and back beams together with two bolts in each. Repeat as required.

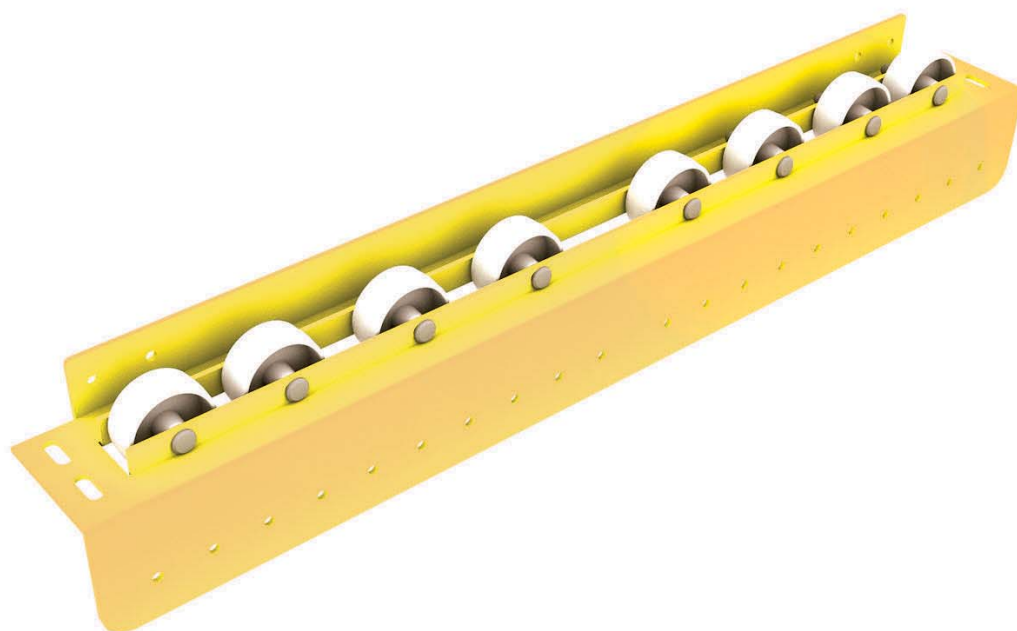


INSTRUKCJA MONTAŻU

STEP 01: Hold the wheel in place and insert the axel pin through the holes in the beam and secure in place with an R-clip.



STEP 02: Repeat for all wheel positions regardless of battery size.



INSTRUKCJA MONTAŻU

INSTRUKCJA MONTAŻU

