

# CESAB S200 0.8 - 2.0 tonne

Powered Stacker Trucks



Truck Specifications



## CESAB S210 - S214 Truck Specifications

| CHARACTERISTICS  |   |                 |            |                                 |
|------------------|---|-----------------|------------|---------------------------------|
| 1.1              | Manufacturer  |                 | CESAB      | CESAB                           |
| 1.2              | Model   |                 | S210       | S212                            |
| 1.3              | Drive   |                 | Electric   | Electric                        |
| 1.4              | Operator type   |                 | Pedestrian | Pedestrian                      |
| 1.5              | Load capacity/rated load                                    | Q               | [kg]       | 1000                            |
| 1.6              | Load centre   | c               | [mm]       | 600                             |
| 1.8              | Load distance, centre of support arm wheel to face of forks | x               | [mm]       | 657                             |
| 1.9              | Wheelbase   | y               | [mm]       | 1190                            |
| 1.6              |   |                 |            | 1200                            |
| 1.8              |   |                 |            | 639                             |
| 1.9              |   |                 |            | 1247                            |
| 1.5              |   |                 |            | 1400                            |
| 1.6              |   |                 |            | 600                             |
| 1.8              |   |                 |            | 639                             |
| 1.9              |   |                 |            | 1247                            |
| WEIGHT           |   |                 |            |                                 |
| 2.1              | Service weight including battery                            |                 | [kg]       | 808                             |
| 2.2              | Axle load, with load, drive/castor/support arm wheel        |                 | [kg]       | 350/280/1185                    |
| 2.3              | Axle load, without load, drive/castor/support arm wheel     |                 | [kg]       | 350/230/235                     |
| 2.1              |   |                 |            | 929                             |
| 2.2              |   |                 |            | 400/290/1445                    |
| 2.3              |   |                 |            | 400/250/285                     |
| 2.1              |   |                 |            | 929                             |
| 2.2              |   |                 |            | 450/245/1640                    |
| 2.3              |   |                 |            | 450/200/285                     |
| WHEELS           |   |                 |            |                                 |
| 3.1              | Drive/castor/fork wheel                                     |                 |            | Friction/Vulkollan/Vulkollan *) |
| 3.2              | Wheel size, front   |                 | [mm]       | Ø230x70                         |
| 3.3              | Wheel size, rear  |                 | [mm]       | Ø85x95                          |
| 3.4              | Additional wheels (dimensions)                              |                 | [mm]       | Ø125x50                         |
| 3.5              | Wheels, number front/rear (x=driven wheels)                 |                 |            | 1x+2/2                          |
| 3.6              | Track width, front  | b <sub>10</sub> | [mm]       | 550                             |
| 3.7              | Track width, rear   | b <sub>11</sub> | [mm]       | 390                             |
| 3.2              |   |                 |            | Ø230x70                         |
| 3.3              |   |                 |            | Ø85x95                          |
| 3.4              |   |                 |            | Ø125x50                         |
| 3.5              |   |                 |            | 1x+2/2                          |
| 3.6              |   |                 |            | 550                             |
| 3.7              |   |                 |            | 390                             |
| DIMENSIONS       |   |                 |            |                                 |
| 4.2              | Height, mast lowered  | h <sub>1</sub>  | [mm]       | 2151 *)                         |
| 4.3              | Free lift   | h <sub>2</sub>  | [mm]       | 166 *)                          |
| 4.4              | Lift  | h <sub>3</sub>  | [mm]       | 3210 *)                         |
|                  | Lift height   | h <sub>23</sub> | [mm]       | 3300 *)                         |
| 4.5              | Height, mast extended                                       | h <sub>4</sub>  | [mm]       | 3720 *)                         |
| 4.8              | Stand height (optional platform)                            | h <sub>7</sub>  | [mm]       | 150                             |
| 4.9              | Height of tiller in drive position, min./max.               | h <sub>14</sub> | [mm]       | 865/1235                        |
| 4.15             | Height, fork lowered  | h <sub>13</sub> | [mm]       | 90                              |
| 4.19             | Overall length  | l <sub>1</sub>  | [mm]       | 1833                            |
| 4.20             | Length to face of forks                                     | l <sub>2</sub>  | [mm]       | 683                             |
| 4.21             | Overall width   | b <sub>1</sub>  | [mm]       | 770                             |
| 4.22             | Fork dimensions   | s/e/l           | [mm]       | 60/180/1150 *)                  |
| 4.24             | Fork-carriage width   | b <sub>3</sub>  | [mm]       | 674                             |
| 4.25             | Width over forks  | b <sub>5</sub>  | [mm]       | 570 *)                          |
| 4.31             | Ground clearance, with load, below mast                     | m <sub>1</sub>  | [mm]       | 27                              |
| 4.32             | Ground clearance, centre of wheelbase                       | m <sub>2</sub>  | [mm]       | 27                              |
| 4.33             | Aisle width for pallets 1000x1200 crossways                 | A <sub>st</sub> | [mm]       | 2231                            |
| 4.34             | Aisle width for pallets 800x1200 lengthways                 | A <sub>st</sub> | [mm]       | 2214                            |
| 4.35             | Turning radius  | W <sub>a</sub>  | [mm]       | 1340                            |
| 4.22             |   |                 |            | 60/180/1150 *)                  |
| 4.24             |   |                 |            | 674                             |
| 4.25             |   |                 |            | 570 *)                          |
| 4.31             |   |                 |            | 27                              |
| 4.32             |   |                 |            | 27                              |
| 4.33             |   |                 |            | 2297                            |
| 4.34             |   |                 |            | 2286                            |
| 4.35             |   |                 |            | 1397                            |
| PERFORMANCE DATA |   |                 |            |                                 |
| 5.1              | Travel speed, with/without load                             |                 | [km/h]     | 6/6                             |
| 5.2              | Lift speed, with/without load                               |                 | [m/s]      | 0.14/0.28                       |
| 5.3              | Lowering speed, with/without load                           |                 | [m/s]      | 0.38/0.38                       |
| 5.8              | Max. gradeability, with/without load                        |                 | [%]        | 8/12 <sup>1)</sup>              |
| 5.10             | Service brake   |                 |            | Electromagnetic                 |
| 5.1              |   |                 |            | 6/6                             |
| 5.2              |   |                 |            | 0.12/0.28                       |
| 5.3              |   |                 |            | 0.38/0.38                       |
| 5.8              |   |                 |            | 8/12 <sup>1)</sup>              |
| 5.10             |   |                 |            | Electromagnetic                 |
| ELECTRIC MOTOR   |   |                 |            |                                 |
| 6.1              | Drive motor rating S2 60 min                                |                 | [kW]       | 1.0                             |
| 6.2              | Lift motor rating at S3 15%                                 |                 | [kW]       | 2.2 <sup>2)</sup>               |
| 6.4              | Battery voltage/nominal capacity K <sub>6</sub>             |                 | [V/Ah]     | 24/150 *)                       |
| 6.5              | Battery weight  |                 | [kg]       | 163 *)                          |
| 6.1              |   |                 |            | 1.0                             |
| 6.2              |   |                 |            | 2.2 <sup>2)</sup>               |
| 6.4              |   |                 |            | 24/225 *)                       |
| 6.5              |   |                 |            | 219 *)                          |
| OTHERS           |   |                 |            |                                 |
| 8.1              | Type of drive control                                       |                 |            | CESAB Drive Control             |
| 8.1              |   |                 |            | CESAB Drive Control             |
| 8.1              |   |                 |            | CESAB Drive Control             |

<sup>1)</sup> Measured according to company standard<sup>2)</sup> S3 6%<sup>3)</sup> Further alternatives are available and will produce other values.

Data is based on standard configurations: Small battery compartment (S210), medium battery compartment (S212 &amp; S214)

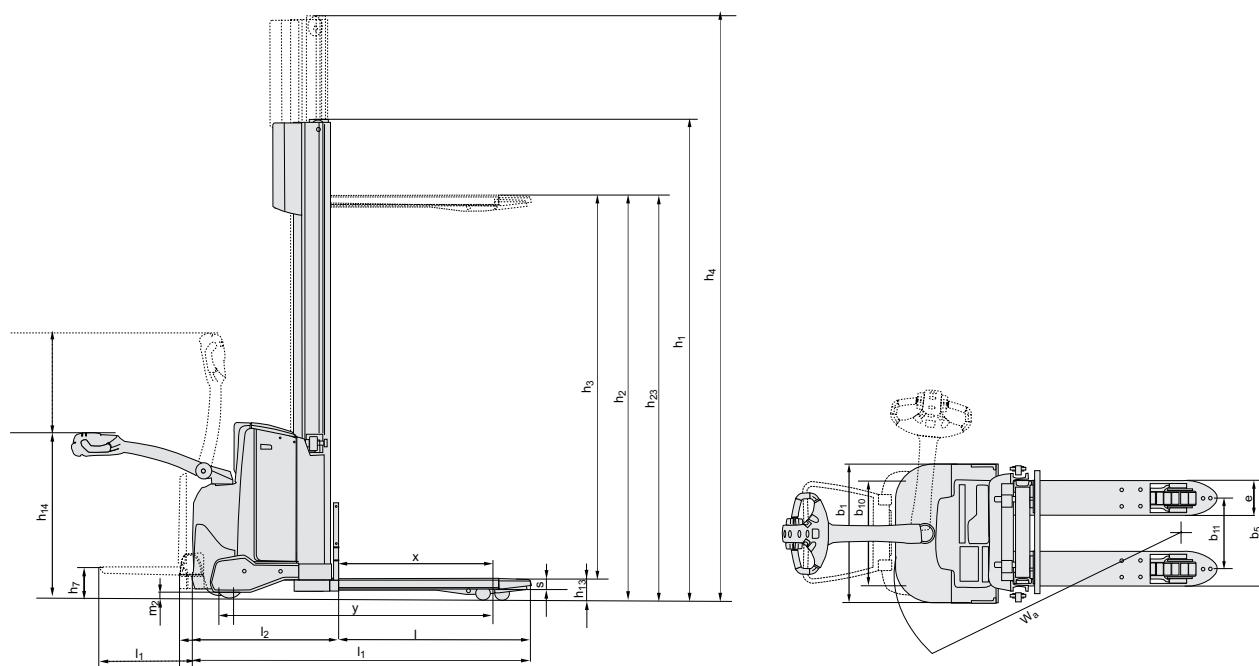
h<sub>23</sub> = 3300 mm Duplex Tele mast (S210), h<sub>23</sub> = 3300 mm Duplex Tele open view mast (S212), h<sub>23</sub> = 3255 mm Duplex Tele open view mast (S214)

Truck performance and dimensions are nominal and subject to tolerances.

Products and specifications are subject to change without notice.



## CESAB S210 - S214 Dimensional Drawings



## Battery compartments

|                     |  |                                      | S210   |                   |                   | S212              |                   |                   | S214              |                   |                   |
|---------------------|--|--------------------------------------|--|-------------------|-------------------|-------------------|-------------------|-------------------|-------------------|-------------------|-------------------|
| Battery change      |  |                                      | Lift out                                     | Lift out          | Lift out          | Lift out          | Lift out          | Sideways          | Lift out          | Lift out          | Sideways          |
| Battery compartment |  |                                      | Small  | Medium            | Large             | Medium            | Large             | Large             | Medium            | Large             | Large             |
| 1.9                 | Wheelbase  | y [mm]                               | 1190   | 1247              | 1297              | 1247              | 1297              | 1297              | 1247              | 1297              | 1297              |
| 4.19                | Overall length                                   | without platform<br>platform up/down | l <sub>1</sub> [mm]<br>l <sub>1</sub> [mm]   | 1833<br>1918/2308 | 1890<br>1975/2365 | 1938<br>2023/2413 | 1908<br>1993/2383 | 1958<br>2043/2443 | 1958<br>2043/2443 | 1908<br>1993/2383 | 1958<br>2043/2443 |
| 4.20                | Length to face of forks                          | without platform<br>platform up/down | l <sub>2</sub> [mm]<br>l <sub>2</sub> [mm]   | 683<br>768/1158   | 740<br>825/1215   | 790<br>875/1265   | 758<br>843/1233   | 808<br>893/1283   | 808<br>893/1283   | 758<br>843/1233   | 808<br>893/1283   |
| 4.33                | Aisle width for pallets<br>1000x1200 crossways   | without platform<br>platform up/down | A <sub>st</sub> [mm]<br>A <sub>st</sub> [mm] | 2231<br>2316/2716 | 2288<br>2373/2773 | 2338<br>2423/2823 | 2297<br>2382/2782 | 2347<br>2432/2832 | 2297<br>2382/2782 | 2347<br>2432/2832 | 2347<br>2432/2832 |
| 4.34                | Aisle width for pallets<br>800x1200 lengthways   | without platform<br>platform up/down | A <sub>st</sub> [mm]<br>A <sub>st</sub> [mm] | 2214<br>2299/2699 | 2271<br>2356/2756 | 2321<br>2406/2806 | 2286<br>2371/2771 | 2336<br>2421/2821 | 2286<br>2371/2771 | 2336<br>2421/2821 | 2336<br>2421/2821 |
| 4.35                | Turning radius                                   | without platform<br>platform up/down | W <sub>a</sub> [mm]<br>W <sub>a</sub> [mm]   | 1340<br>1425/1825 | 1397<br>1482/1882 | 1447<br>1532/1932 | 1397<br>1482/1882 | 1447<br>1532/1932 | 1447<br>1532/1932 | 1397<br>1482/1882 | 1447<br>1532/1932 |
| 6.4                 | Battery voltage, nominal capacity K <sub>s</sub> | [V/<br>Ah]                           | 24/150                                       | 24/225            | 24/300            | 24/225            | 24/300            | 24/260            | 24/225            | 24/300            | 24/260            |
| 6.5                 | Battery weight, min.-max.                        | [kg]                                 | 120-165                                      | 189-250           | 230-280           | 189-250           | 230-280           | 209-205           | 189-250           | 230-280           | 209-250           |

## Mast Specifications

| S210            |  |      | Simplex |      |      | Duplex Tele |      |      | Duplex Tele Open View |      |  |
|-----------------|--|------|---------|------|------|-------------|------|------|-----------------------|------|--|
| h <sub>23</sub> | Lift height (h <sub>13</sub> +h <sub>3</sub> ) | [mm] | 1400    | 1700 | 2700 | 2900        | 3300 | 2700 | 2900                  | 3300 |  |
| h <sub>3</sub>  | Lift   | [mm] | 1310    | 1610 | 2610 | 2810        | 3210 | 2610 | 2810                  | 3210 |  |
| h <sub>1</sub>  | Height, mast lowered                           | [mm] | 1825    | 2125 | 1851 | 1951        | 2151 | 1835 | 1935                  | 2135 |  |
| h <sub>2</sub>  | Free lift, ground to top of forks              | [mm] | 1400    | 1700 | 166  | 166         | 166  | 166  | 166                   | 166  |  |
| h <sub>4</sub>  | Height, mast extended                          | [mm] | 1825    | 2125 | 3125 | 3325        | 3725 | 3120 | 3320                  | 3720 |  |

| S212            |  |      | Simplex |      | Duplex Tele |      |      |      |      | Duplex Tele Open View |      |      |      |      | Duplex Freelift |      |      |      |      | Triplex Freelift |      |      |      |  |
|-----------------|--|------|---------|------|-------------|------|------|------|------|-----------------------|------|------|------|------|-----------------|------|------|------|------|------------------|------|------|------|--|
| h <sub>23</sub> | Lift height (h <sub>13</sub> +h <sub>3</sub> ) | [mm] | 1400    | 1700 | 2700        | 2900 | 3300 | 3700 | 4150 | 2700                  | 2900 | 3300 | 3700 | 4150 | 2700            | 2900 | 3300 | 3700 | 4150 | 3300             | 3700 | 4150 | 4500 |  |
| h <sub>3</sub>  | Lift   | [mm] | 1310    | 1610 | 2610        | 2810 | 3210 | 3610 | 4060 | 2610                  | 2810 | 3210 | 3610 | 4060 | 2610            | 2810 | 3210 | 3610 | 4060 | 3210             | 3610 | 4060 | 4410 |  |
| h <sub>1</sub>  | Height, mast lowered                           | [mm] | 1825    | 2125 | 1840        | 1940 | 2140 | 2340 | 2565 | 1835                  | 1935 | 2135 | 2335 | 2560 | 1835            | 1935 | 2135 | 2335 | 2560 | 1695             | 1829 | 1979 | 2095 |  |
| h <sub>2</sub>  | Free lift, ground to top of forks              | [mm] | 1400    | 1700 | 166         | 166  | 166  | 166  | 166  | 166                   | 166  | 166  | 166  | 166  | 1420            | 1520 | 1720 | 1920 | 2144 | 1270             | 1404 | 1554 | 1670 |  |
| h <sub>4</sub>  | Height, mast extended                          | [mm] | 1825    | 2125 | 3125        | 3325 | 3725 | 4125 | 4575 | 3120                  | 3320 | 3720 | 4120 | 4570 | 3141            | 3341 | 3741 | 4141 | 4591 | 3747             | 4149 | 4599 | 4947 |  |

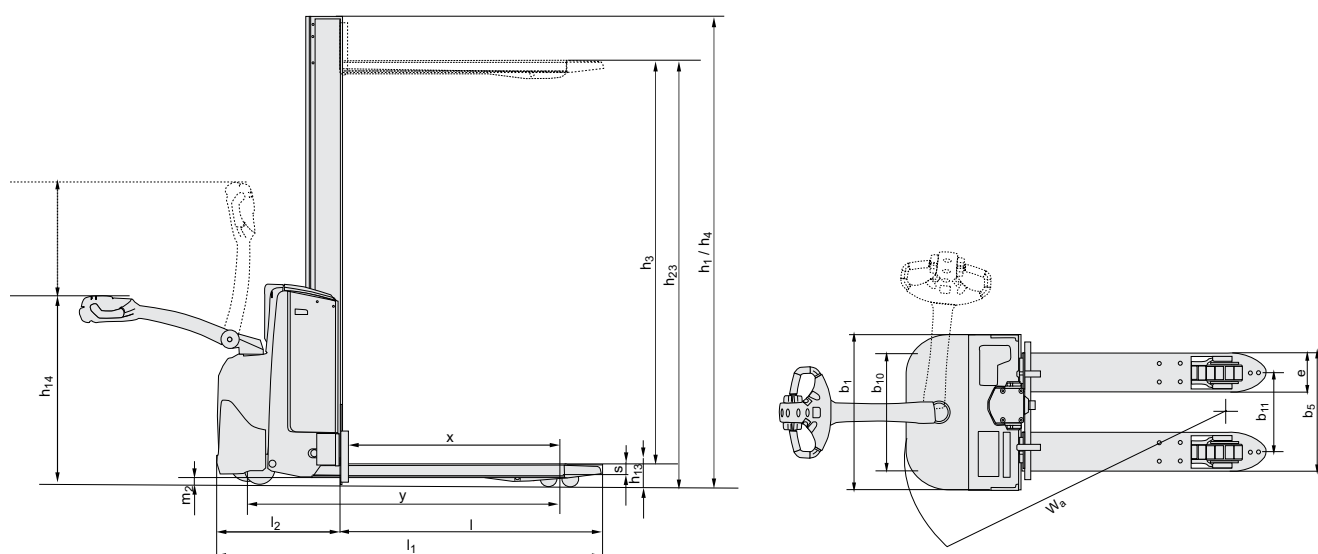
| S214            |  |      | Duplex Tele Open View |      |      | Duplex Freelif |      |      | Triplex Freelif |      |      |
|-----------------|--|------|-----------------------|------|------|----------------|------|------|-----------------|------|------|
| h <sub>23</sub> | Lift height (h <sub>13</sub> +h <sub>3</sub> ) | [mm] | 2655                  | 2855 | 3255 | 3655           | 4105 | 2655 | 2855            | 3255 | 3655 |
| h <sub>3</sub>  | Lift   | [mm] | 2565                  | 2765 | 3165 | 3565           | 4015 | 2565 | 2765            | 3165 | 3565 |
| h <sub>1</sub>  | Height, mast lowered                           | [mm] | 1860                  | 1960 | 2160 | 2360           | 2585 | 1835 | 1935            | 2135 | 2335 |
| h <sub>2</sub>  | Free lift, ground to top of forks              | [mm] | 166                   | 166  | 166  | 166            | 166  | 1374 | 1474            | 1674 | 1874 |
| h <sub>4</sub>  | Height, mast extended                          | [mm] | 3125                  | 3325 | 3725 | 4125           | 4575 | 3141 | 3341            | 3741 | 4141 |

## CESAB S208L Truck Specifications

| CHARACTERISTICS  |   |                 |        | Elevating support arms          |
|------------------|---|-----------------|--------|---------------------------------|
| 1.1              | Manufacturer  |                 |        | CESAB                           |
| 1.2              | Model   |                 |        | S208L                           |
| 1.3              | Drive   |                 |        | Electric                        |
| 1.4              | Operator type   |                 |        | Pedestrian                      |
| 1.5              | Load capacity/rated load                                    | Q               | [kg]   | 800                             |
|                  | Support arm capacity/fork and support arm capacity          | Q               | [kg]   | 2000/-                          |
| 1.6              | Load centre   | c               | [mm]   | 600                             |
| 1.8              | Load distance, centre of support arm wheel to face of forks | x               | [mm]   | 874                             |
| 1.9              | Wheelbase   | y               | [mm]   | 1293                            |
| WEIGHT           |   |                 |        |                                 |
| 2.1              | Service weight including battery                            |                 | [kg]   | 679                             |
| 2.2              | Axle load, with load, drive/castor/support arm wheel        |                 | [kg]   | 525/150/830                     |
| 2.3              | Axle load, without load, drive/castor/support arm wheel     |                 | [kg]   | 375/150/180                     |
| WHEELS           |   |                 |        |                                 |
| 3.1              | Drive/castor/fork wheel                                     |                 |        | Friction/Vulkollan/Vulkollan *) |
| 3.2              | Wheel size, front   |                 | [mm]   | Ø230x70                         |
| 3.3              | Wheel size, rear  |                 | [mm]   | Ø85x74                          |
| 3.4              | Additional wheels (dimensions)                              |                 | [mm]   | Ø125x50                         |
| 3.5              | Wheels, number front/rear (x=driven wheels)                 |                 |        | 1x+2/4                          |
| 3.6              | Track width, front  | b <sub>10</sub> | [mm]   | 430                             |
| 3.7              | Track width, rear   | b <sub>11</sub> | [mm]   | 390                             |
| DIMENSIONS       |   |                 |        |                                 |
| 4.2              | Height, mast lowered  | h <sub>1</sub>  | [mm]   | 1863 *)                         |
| 4.3              | Free lift   | h <sub>2</sub>  | [mm]   | 1580 *)                         |
| 4.4              | Lift  | h <sub>3</sub>  | [mm]   | 1490 *)                         |
|                  | Lift height   | h <sub>23</sub> | [mm]   | 1580 *)                         |
| 4.5              | Height, mast extended                                       | h <sub>4</sub>  | [mm]   | 1863 *)                         |
| 4.9              | Height of tiller in drive position, min./max.               | h <sub>14</sub> | [mm]   | 865/1235                        |
| 4.15             | Height, fork lowered  | h <sub>13</sub> | [mm]   | 90                              |
| 4.19             | Overall length  | l <sub>1</sub>  | [mm]   | 1777                            |
| 4.20             | Length to face of forks                                     | l <sub>2</sub>  | [mm]   | 628                             |
| 4.21             | Overall width   | b <sub>1</sub>  | [mm]   | 726                             |
| 4.22             | Fork dimensions   | s/e/l           | [mm]   | 60/180/1150 *)                  |
| 4.24             | Fork-carriage width   | b <sub>3</sub>  | [mm]   | 674                             |
| 4.25             | Width over forks  | b <sub>5</sub>  | [mm]   | 570 *)                          |
| 4.31             | Ground clearance, with load, below mast                     | m <sub>1</sub>  | [mm]   | 25                              |
| 4.32             | Ground clearance, centre of wheelbase                       | m <sub>2</sub>  | [mm]   | 25                              |
| 4.33             | Aisle width for pallets 1000x1200 crossways                 | A <sub>st</sub> | [mm]   | 2256                            |
| 4.34             | Aisle width for pallets 800x1200 lengthways                 | A <sub>st</sub> | [mm]   | 2159                            |
| 4.35             | Turning radius  | W <sub>a</sub>  | [mm]   | 1443                            |
| PERFORMANCE DATA |   |                 |        |                                 |
| 5.1              | Travel speed, with/without load                             |                 | [km/h] | 6/6                             |
| 5.2              | Lift speed, with/without load                               |                 | [m/s]  | 0.14/0.21                       |
| 5.3              | Lowering speed, with/without load                           |                 | [m/s]  | 0.29/0.20                       |
| 5.8              | Max. gradeability, with/without load                        |                 | [%]    | 9/18 <sup>1)</sup>              |
| 5.10             | Service brake   |                 |        | Electromagnetic                 |
| ELECTRIC MOTOR   |   |                 |        |                                 |
| 6.1              | Drive motor rating S2 60 min                                |                 | [kW]   | 1.0                             |
| 6.2              | Lift motor rating at S3 15%                                 |                 | [kW]   | 2.0 <sup>2)</sup>               |
| 6.4              | Battery voltage/nominal capacity K <sub>6</sub>             |                 | [V/Ah] | 2x12/180 <sup>3)</sup>          |
| 6.5              | Battery weight  |                 | [kg]   | 2x109 <sup>3)</sup>             |
| OTHERS           |   |                 |        |                                 |
| 8.1              | Type of drive control                                       |                 |        | CESAB Drive Control             |

<sup>1)</sup> Measured according to company standard<sup>2)</sup> S3 7%<sup>3)</sup> Further alternatives are available and will produce other values.Data is based on standard configurations: h<sub>23</sub> = 1580 mm Mono mastTruck performance and dimensions are nominal and subject to tolerances.  
Products and specifications are subject to change without notice.

# CESAB S208L Dimensional Drawings



## Mast Specifications

| S208L    |                                   |      | Mono |      |
|----------|-----------------------------------|------|------|------|
| $h_{23}$ | Lift height ( $h_{13}+h_3$ )      | [mm] | 600  | 1580 |
| $h_3$    | Lift                              | [mm] | 510  | 1490 |
| $h_1$    | Height, mast lowered              | [mm] | 908  | 1863 |
| $h_2$    | Free lift, ground to top of forks | [mm] | 600  | 1580 |
| $h_4$    | Height, mast extended             | [mm] | 908  | 1863 |

## CESAB S212L - S214L - S220D Truck Specifications

| CHARACTERISTICS  |   |                                |        | Elevating Support Arms          | Elevating Support Arms       | Double Stacker                  |
|------------------|---|--------------------------------|--------|---------------------------------|------------------------------|---------------------------------|
| 1.1              | Manufacturer  |                                |        | CESAB                           | CESAB                        | CESAB                           |
| 1.2              | Model   |                                |        | S212L                           | S214L                        | S220D                           |
| 1.3              | Drive   |                                |        | Electric                        | Electric                     | Electric                        |
| 1.4              | Operator type   |                                |        | Pedestrian                      | Pedestrian                   | Pedestrian                      |
| 1.5              | Load capacity/rated load                                    | Q                              | [kg]   | 1200                            | 1400                         | 1000                            |
|                  | Support arm capacity/fork and support arm capacity          | Q                              | [kg]   | 1600/-                          | 2000/-                       | 2000/800+1200                   |
| 1.6              | Load centre   | c                              | [mm]   | 600                             | 600                          | 600                             |
| 1.8              | Load distance, centre of support arm wheel to face of forks | x                              | [mm]   | 632                             | 632                          | 865                             |
| 1.9              | Wheelbase   | y                              | [mm]   | 1243                            | 1243                         | 1483                            |
| WEIGHT           |   |                                |        |                                 |                              |                                 |
| 2.1              | Service weight including battery                            |                                | [kg]   | 929                             | 929                          | 879                             |
| 2.2              | Axle load, with load, drive/castor/support arm wheel        |                                | [kg]   | 450/340/1345                    | 450/360/1525                 | 570/360/1155                    |
| 2.3              | Axle load, without load, drive/castor/support arm wheel     |                                | [kg]   | 450/220/265                     | 450/220/265                  | 570/100/215                     |
| WHEELS           |   |                                |        |                                 |                              |                                 |
| 3.1              | Drive/castor/fork wheel                                     |                                |        | Friction/Vulkollan/Vulkollan *) | Friction/Vulkollan/Vulkollan | Friction/Vulkollan/Vulkollan *) |
| 3.2              | Wheel size, front   |                                | [mm]   | Ø230x70                         | Ø230x70                      | Ø230x70                         |
| 3.3              | Wheel size, rear  |                                | [mm]   | Ø85x74                          | Ø85x74                       | Ø85x74                          |
| 3.4              | Additional wheels (dimensions)                              |                                | [mm]   | Ø125x50                         | Ø125x50                      | Ø125x50                         |
| 3.5              | Wheels, number front/rear (x=driven wheels)                 |                                |        | 1x+2/4                          | 1x+2/4                       | 1x2/4                           |
| 3.6              | Track width, front  | b <sub>10</sub>                | [mm]   | 550                             | 550                          | 550                             |
| 3.7              | Track width, rear   | b <sub>11</sub>                | [mm]   | 390                             | 390                          | 390                             |
| DIMENSIONS       |   |                                |        |                                 |                              |                                 |
| 4.2              | Height, mast lowered  | h <sub>1</sub>                 | [mm]   | 2135 *)                         | 2160 *)                      | 1535 *)                         |
| 4.3              | Free lift   | h <sub>2</sub>                 | [mm]   | 166 *)                          | 166 *)                       | 166 *)                          |
| 4.4              | Lift  | h <sub>3</sub>                 | [mm]   | 3210 *)                         | 3165 *)                      | 2010 *)                         |
|                  | Lift height   | h <sub>23</sub>                | [mm]   | 3300 *)                         | 3255 *)                      | 2100 *)                         |
| 4.5              | Height, mast extended                                       | h <sub>4</sub>                 | [mm]   | 3740 *)                         | 3725 *)                      | 2520 *)                         |
| 4.6              | Initial lift  | h <sub>5</sub>                 | [mm]   | 120                             | 120                          | 120                             |
| 4.8              | Stand height (optional platform)                            | h <sub>7</sub>                 | [mm]   | 150                             | 150                          | 150                             |
| 4.9              | Height of tiller in drive position, min./max.               | h <sub>14</sub>                | [mm]   | 865/1235                        | 865/1235                     | 865/1235                        |
| 4.15             | Height, fork lowered  | h <sub>13</sub>                | [mm]   | 90                              | 90                           | 90                              |
| 4.19             | Overall length  | l <sub>1</sub>                 | [mm]   | 1911                            | 1911                         | 1910                            |
| 4.20             | Length to face of forks                                     | l <sub>2</sub>                 | [mm]   | 761                             | 761                          | 760                             |
| 4.21             | Overall width   | b <sub>1</sub> /b <sub>2</sub> | [mm]   | 770                             | 770 *)                       | 770                             |
| 4.22             | Fork dimensions   | s/e/l                          | [mm]   | 60/180/1150 *)                  | 70/180/1150 *)               | 60/180/1150 *)                  |
| 4.24             | Fork-carriage width   | b <sub>3</sub>                 | [mm]   | 674                             | 674                          | 674                             |
| 4.25             | Width over forks  | b <sub>5</sub>                 | [mm]   | 570 *)                          | 570 *)                       | 570 *)                          |
| 4.31             | Ground clearance, with load, below mast                     | m <sub>1</sub>                 | [mm]   | 22                              | 22                           | 22                              |
| 4.32             | Ground clearance, centre of wheelbase                       | m <sub>2</sub>                 | [mm]   | 22                              | 22                           | 22                              |
| 4.33             | Aisle width for pallets 1000x1200 crossways                 | A <sub>st</sub>                | [mm]   | 2297                            | 2297                         | 2448                            |
| 4.34             | Aisle width for pallets 800x1200 lengthways                 | A <sub>st</sub>                | [mm]   | 2288                            | 2288                         | 2355                            |
| 4.35             | Turning radius  | W <sub>a</sub>                 | [mm]   | 1393                            | 1393                         | 1633                            |
| PERFORMANCE DATA |   |                                |        |                                 |                              |                                 |
| 5.1              | Travel speed, with/without load                             |                                | [km/h] | 6/6                             | 6/6                          | 6/6                             |
| 5.2              | Lift speed, with/without load                               |                                | [m/s]  | 0.12/0.27                       | 0.11/0.27                    | 0.14/0.27                       |
| 5.3              | Lowering speed, with/without load                           |                                | [m/s]  | 0.38/0.32                       | 0.37/0.32                    | 0.38/0.32                       |
| 5.8              | Max. gradeability, with/without load                        |                                | [%]    | 9/12 <sup>1)</sup>              | 8/12 <sup>1)</sup>           | 8/12 <sup>1)</sup>              |
| 5.10             | Service brake   |                                |        | Electromagnetic                 | Electromagnetic              | Electromagnetic                 |
| ELECTRIC MOTOR   |   |                                |        |                                 |                              |                                 |
| 6.1              | Drive motor rating S2 60 min                                |                                | [kW]   | 1.5                             | 1.5                          | 1.5                             |
| 6.2              | Lift motor rating at S3 15%                                 |                                | [kW]   | 2.2 <sup>2)</sup>               | 2.2 <sup>2)</sup>            | 2.2 <sup>2)</sup>               |
| 6.4              | Battery voltage/nominal capacity K <sub>5</sub>             |                                | [V/Ah] | 24/225 *)                       | 24/225 *)                    | 24/225 *)                       |
| 6.5              | Battery weight  |                                | [kg]   | 219 *)                          | 219 *)                       | 219 *)                          |
| OTHERS           |   |                                |        |                                 |                              |                                 |
| 8.1              | Type of drive control                                       |                                |        | CESAB Drive Control             | CESAB Drive Control          | CESAB Drive Control             |

<sup>1)</sup> Measured according to company standard<sup>2)</sup> S3 6%<sup>3)</sup> Further alternatives are available and will produce other values.

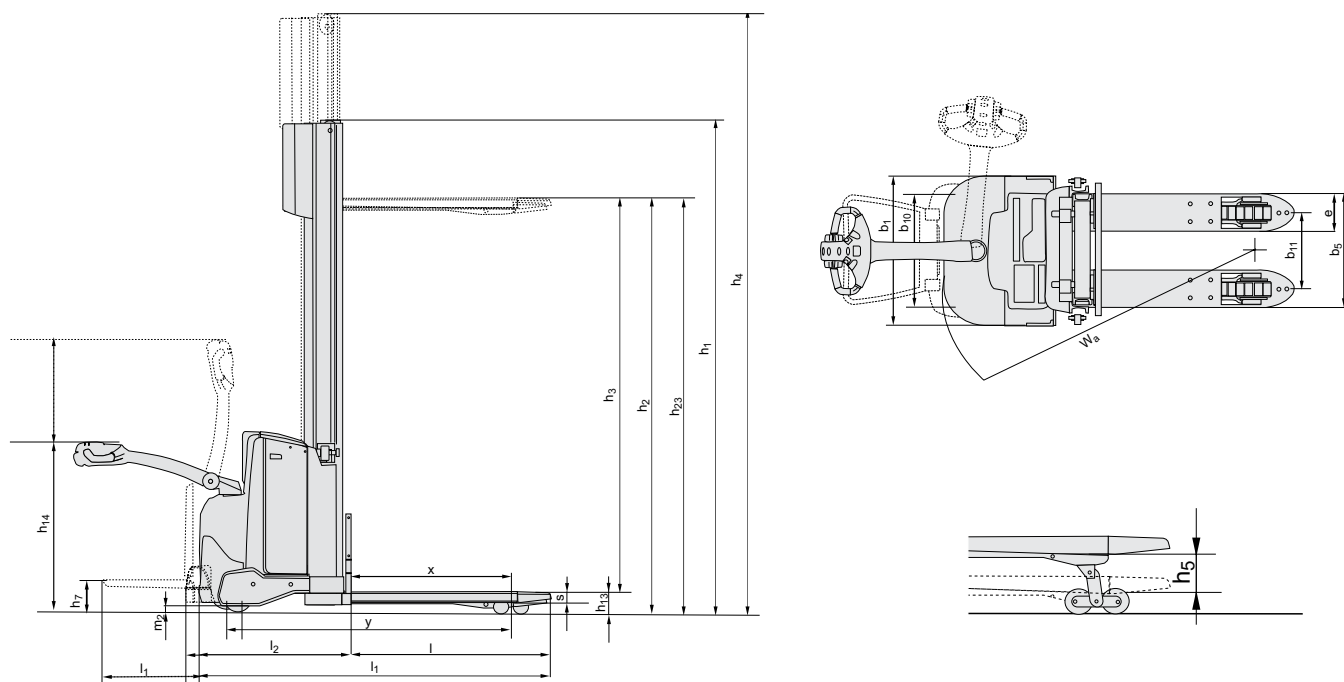
Data is based on standard configurations: medium battery compartment,  
h<sub>23</sub> = 3300 mm (S212L), 3255 mm (S214L) and 2100 mm (S220D) Duplex Tele Open View mast.

Truck performance and dimensions are nominal and subject to tolerances.  
Products and specifications are subject to change without notice.





## CESAB S212L - S214L - S220D Dimensional Drawings



## Battery compartments

|                     |  |                                      | S212L                          |                   |                   | S214L             |                   |                   | S220D             |                   |                   |
|---------------------|--|--------------------------------------|--------------------------------|-------------------|-------------------|-------------------|-------------------|-------------------|-------------------|-------------------|-------------------|
| Battery change      |  |                                      | Lift out                       | Lift out          | Sideways          | Lift out          | Lift out          | Sideways          | Lift out          | Lift out          | Sideways          |
| Battery compartment |  |                                      | Medium                         | Large             | Large             | Medium            | Large             | Large             | Medium            | Large             | Large             |
| 1.9                 | Wheelbase                                      | y [mm]                               | 1243                           | 1293              | 1293              | 1243              | 1293              | 1293              | 1483              | 1533              | 1533              |
| 4.19                | Overall length                                 | without platform<br>platform up/down | $l_1$ [mm]<br>$l_1$ [mm]       | 1911<br>1996/2386 | 1961<br>2046/2436 | 1961<br>2046/2436 | 1911<br>1996/2386 | 1961<br>2046/2436 | 1961<br>2046/2436 | 1910<br>1995/2385 | 1960<br>2045/2435 |
| 4.20                | Length to face of forks                        | without platform<br>platform up/down | $l_2$ [mm]<br>$l_2$ [mm]       | 761<br>846/1236   | 811<br>896/1286   | 811<br>896/1286   | 761<br>846/1236   | 811<br>896/1286   | 811<br>896/1286   | 760<br>845/1235   | 810<br>895/1285   |
| 4.33                | Aisle width for pallets<br>1000x1200 crossways | without platform<br>platform up/down | $A_{st}$ [mm]<br>$A_{st}$ [mm] | 2297<br>2382/2782 | 2347<br>2432/2832 | 2347<br>2432/2832 | 2297<br>2382/2782 | 2347<br>2432/2832 | 2347<br>2432/2832 | 2448<br>2533/2933 | 2498<br>2583/2983 |
| 4.34                | Aisle width for pallets<br>800x1200 lengthways | without platform<br>platform up/down | $A_{st}$ [mm]<br>$A_{st}$ [mm] | 2288<br>2373/2773 | 2338<br>2423/2823 | 2338<br>2423/2823 | 2288<br>2373/2773 | 2338<br>2423/2823 | 2338<br>2423/2823 | 2355<br>2440/2840 | 2405<br>2490/2890 |
| 4.35                | Turning radius                                 | without platform<br>platform up/down | $W_a$ [mm]<br>$W_a$ [mm]       | 1393<br>1478/1878 | 1443<br>1528/1928 | 1443<br>1528/1928 | 1393<br>1478/1878 | 1443<br>1528/1928 | 1443<br>1528/1928 | 1633<br>1718/2118 | 1683<br>1768/2168 |
| 6.4                 | Battery voltage, nominal capacity $K_6$        | [V/Ah]                               | 24/225                         | 24/300            | 24/260            | 24/225            | 24/300            | 24/260            | 24/225            | 24/300            | 24/260            |
| 6.5                 | Battery weight, min.-max.                      | [kg]                                 | 189-250                        | 230-280           | 209-250           | 189-250           | 230-280           | 209-250           | 189-250           | 230-280           | 209-250           |

## Mast Specifications

| S212L    |                                   |      | Simplex |      | Duplex Tele           |      |      |      | Duplex Tele Open View |      |      |      | Duplex Freelift  |      |      |      | Triplex Freelift |      |      |      |      |      |      |
|----------|-----------------------------------|------|---------|------|-----------------------|------|------|------|-----------------------|------|------|------|------------------|------|------|------|------------------|------|------|------|------|------|------|
| $h_{23}$ | Lift height ( $h_{13}+h_3$ )      | [mm] | 1400    | 1700 | 2700                  | 2900 | 3300 | 3700 | 4150                  | 2700 | 2900 | 3300 | 3700             | 4150 | 2700 | 2900 | 3300             | 3700 | 4150 | 3300 | 3700 | 4150 | 4500 |
| $h_3$    | Lift                              | [mm] | 1310    | 1610 | 2610                  | 2810 | 3210 | 3610 | 4060                  | 2610 | 2810 | 3210 | 3610             | 4060 | 2610 | 2810 | 3210             | 3610 | 4060 | 3210 | 3610 | 4060 | 4410 |
| $h_1$    | Height, mast lowered              | [mm] | 1825    | 2125 | 1840                  | 1940 | 2140 | 2340 | 2565                  | 1835 | 1935 | 2135 | 2335             | 2560 | 1835 | 1935 | 2135             | 2335 | 2560 | 1695 | 1829 | 1979 | 2095 |
| $h_2$    | Free lift, ground to top of forks | [mm] | 1400    | 1700 | 166                   | 166  | 166  | 166  | 166                   | 166  | 166  | 166  | 166              | 166  | 1420 | 1520 | 1720             | 1920 | 2144 | 1270 | 1404 | 1554 | 1670 |
| $h_4$    | Height, mast extended             | [mm] | 1825    | 2125 | 3125                  | 3325 | 3725 | 4125 | 4575                  | 3120 | 3320 | 3720 | 4120             | 4570 | 3341 | 3341 | 3741             | 4141 | 4591 | 3747 | 4149 | 4599 | 4947 |
| S214L    |                                   |      |         |      | Duplex Tele Open View |      |      |      | Duplex Freelift       |      |      |      | Triplex Freelift |      |      |      |                  |      |      |      |      |      |      |
| $h_{23}$ | Lift height ( $h_{13}+h_3$ )      | [mm] |         |      | 2655                  | 2855 | 3255 | 3655 | 4105                  | 2655 | 2855 | 3255 | 3655             | 4105 | 3255 | 3655 | 4105             | 4455 | 4755 |      |      |      |      |
| $h_3$    | Lift                              | [mm] |         |      | 2565                  | 2765 | 3165 | 3565 | 4015                  | 2565 | 2765 | 3165 | 3565             | 4015 | 3165 | 3565 | 4015             | 4365 | 4665 |      |      |      |      |
| $h_1$    | Height, mast lowered              | [mm] |         |      | 1860                  | 1960 | 2160 | 2360 | 2585                  | 1835 | 1935 | 2135 | 2335             | 2560 | 1695 | 1829 | 1979             | 2095 | 2195 |      |      |      |      |
| $h_2$    | Free lift, ground to top of forks | [mm] |         |      | 166                   | 166  | 166  | 166  | 166                   | 1374 | 1474 | 1674 | 1874             | 2099 | 1224 | 1358 | 1508             | 1624 | 1724 |      |      |      |      |
| $h_4$    | Height, mast extended             | [mm] |         |      | 3125                  | 3325 | 3725 | 4125 | 4575                  | 3141 | 3341 | 3741 | 4141             | 4591 | 3747 | 4149 | 4599             | 4947 | 5247 |      |      |      |      |
| S220D    |                                   |      |         |      | Duplex Tele           |      |      |      | Duplex Tele Open View |      |      |      |                  |      |      |      |                  |      |      |      |      |      |      |
| $h_{23}$ | Lift height ( $h_{13}+h_3$ )      | [mm] |         |      | 1700                  |      | 1900 |      | 2100                  |      | 1700 |      | 1900             |      | 2100 |      |                  |      |      |      |      |      |      |
| $h_3$    | Lift                              | [mm] |         |      | 1610                  |      | 1810 |      | 2010                  |      | 1610 |      | 1810             |      | 2010 |      |                  |      |      |      |      |      |      |
| $h_1$    | Height, mast lowered              | [mm] |         |      | 1340                  |      | 1440 |      | 1540                  |      | 1335 |      | 1435             |      | 1535 |      |                  |      |      |      |      |      |      |
| $h_2$    | Free lift, ground to top of forks | [mm] |         |      | 166                   |      | 166  |      | 166                   |      | 166  |      | 166              |      | 166  |      |                  |      |      |      |      |      |      |
| $h_4$    | Height, mast extended             | [mm] |         |      | 2125                  |      | 2325 |      | 2525                  |      | 2120 |      | 2320             |      | 2520 |      |                  |      |      |      |      |      |      |

## CESAB S212S Truck Specifications

| CHARACTERISTICS  |   |                                |        | Straddle Support Arms           |
|------------------|---|--------------------------------|--------|---------------------------------|
| 1.1              | Manufacturer  |                                |        | CESAB                           |
| 1.2              | Model   |                                |        | S212S                           |
| 1.3              | Drive   |                                |        | Electric                        |
| 1.4              | Operator type   |                                |        | Pedestrian                      |
| 1.5              | Load capacity/rated load                                    | Q                              | [kg]   | 1200                            |
| 1.6              | Load centre   | c                              | [mm]   | 600                             |
| 1.8              | Load distance, centre of support arm wheel to face of forks | x                              | [mm]   | 561                             |
| 1.9              | Wheelbase   | y                              | [mm]   | 1203                            |
| WEIGHT           |   |                                |        |                                 |
| 2.1              | Service weight including battery                            |                                | [kg]   | 1009                            |
| 2.2              | Axle load, with load, drive/castor/support arm wheel        |                                | [kg]   | 635/1580                        |
| 2.3              | Axle load, without load, drive/castor/support arm wheel     |                                | [kg]   | 675/340                         |
| WHEELS           |   |                                |        |                                 |
| 3.1              | Drive/castor/fork wheel                                     |                                |        | Friction/Vulkollan/Vulkollan *) |
| 3.2              | Wheel size, front   |                                | [mm]   | Ø230x70                         |
| 3.3              | Wheel size, rear  |                                | [mm]   | Ø100x73                         |
| 3.5              | Wheels, number front/rear (x=driven wheels)                 |                                |        | 1x/2                            |
| 3.7              | Track width, rear   | b <sub>11</sub>                | [mm]   | 1000                            |
| DIMENSIONS       |   |                                |        |                                 |
| 4.2              | Height, mast lowered  | h <sub>1</sub>                 | [mm]   | 1832 *)                         |
| 4.3              | Free lift   | h <sub>2</sub>                 | [mm]   | 1380 *)                         |
| 4.4              | Lift  | h <sub>3</sub>                 | [mm]   | 2655 *)                         |
|                  | Lift height   | h <sub>23</sub>                | [mm]   | 2655 *)                         |
| 4.5              | Height, mast extended                                       | h <sub>4</sub>                 | [mm]   | 3226 *)                         |
| 4.8              | Stand height (optional platform)                            | h <sub>7</sub>                 | [mm]   | 150                             |
| 4.9              | Height of tiller in drive position, min./max.               | h <sub>14</sub>                | [mm]   | 865/1235                        |
| 4.10             | Height of support arm                                       | h <sub>10</sub>                | [mm]   | 100                             |
| 4.15             | Height, fork lowered  | h <sub>13</sub>                | [mm]   | 50                              |
| 4.19             | Overall length  | l <sub>1</sub>                 | [mm]   | 1942                            |
| 4.20             | Length to face of forks                                     | l <sub>2</sub>                 | [mm]   | 792                             |
| 4.21             | Overall width   | b <sub>1</sub> /b <sub>2</sub> | [mm]   | 770/1100 *)                     |
| 4.22             | Fork dimensions   | s/e/l                          | [mm]   | 40/100/1150 *)                  |
| 4.24             | Fork-carriage width   | b <sub>3</sub>                 | [mm]   | 840                             |
| 4.25             | Width over forks  | b <sub>5</sub>                 | [mm]   | 252—800                         |
| 4.26             | Distance between support arms                               | b <sub>4</sub>                 | [mm]   | 900 *)                          |
| 4.31             | Ground clearance, with load, below mast                     | m <sub>1</sub>                 | [mm]   | 32                              |
| 4.32             | Ground clearance, centre of wheelbase                       | m <sub>2</sub>                 | [mm]   | 40                              |
| 4.33             | Aisle width for pallets 1000x1200 crossways                 | A <sub>st</sub>                | [mm]   | 2297                            |
| 4.34             | Aisle width for pallets 800x1200 lengthways                 | A <sub>st</sub>                | [mm]   | 2307                            |
| 4.35             | Turning radius  | W <sub>a</sub>                 | [mm]   | 1353                            |
| PERFORMANCE DATA |   |                                |        |                                 |
| 5.1              | Travel speed, with/without load                             |                                | [km/h] | 6/6                             |
| 5.2              | Lift speed, with/without load                               |                                | [m/s]  | 0.11/0.21                       |
| 5.3              | Lowering speed, with/without load                           |                                | [m/s]  | 0.33/0.24                       |
| 5.8              | Max. gradeability, with/without load                        |                                | [%]    | 8/10 <sup>1)</sup>              |
| 5.10             | Service brake   |                                |        | Electromagnetic                 |
| ELECTRIC MOTOR   |   |                                |        |                                 |
| 6.1              | Drive motor rating S2 60 min                                |                                | [kW]   | 1.0                             |
| 6.2              | Lift motor rating at S3 15%                                 |                                | [kW]   | 2.2 <sup>2)</sup>               |
| 6.4              | Battery voltage/nominal capacity K <sub>5</sub>             |                                | [V/Ah] | 24/225 *)                       |
| 6.5              | Battery weight  |                                | [kg]   | 219 *)                          |
| OTHERS           |   |                                |        |                                 |
| 8.1              | Type of drive control                                       |                                |        | CESAB Drive Control             |

<sup>1)</sup> Measured according to company standard<sup>2)</sup> S3 6%<sup>3)</sup> Further alternatives are available and will produce other values.Data is based on standard configurations: medium battery compartment, h<sub>23</sub> = 2655 mm Duplex Freelif mast (S212S).

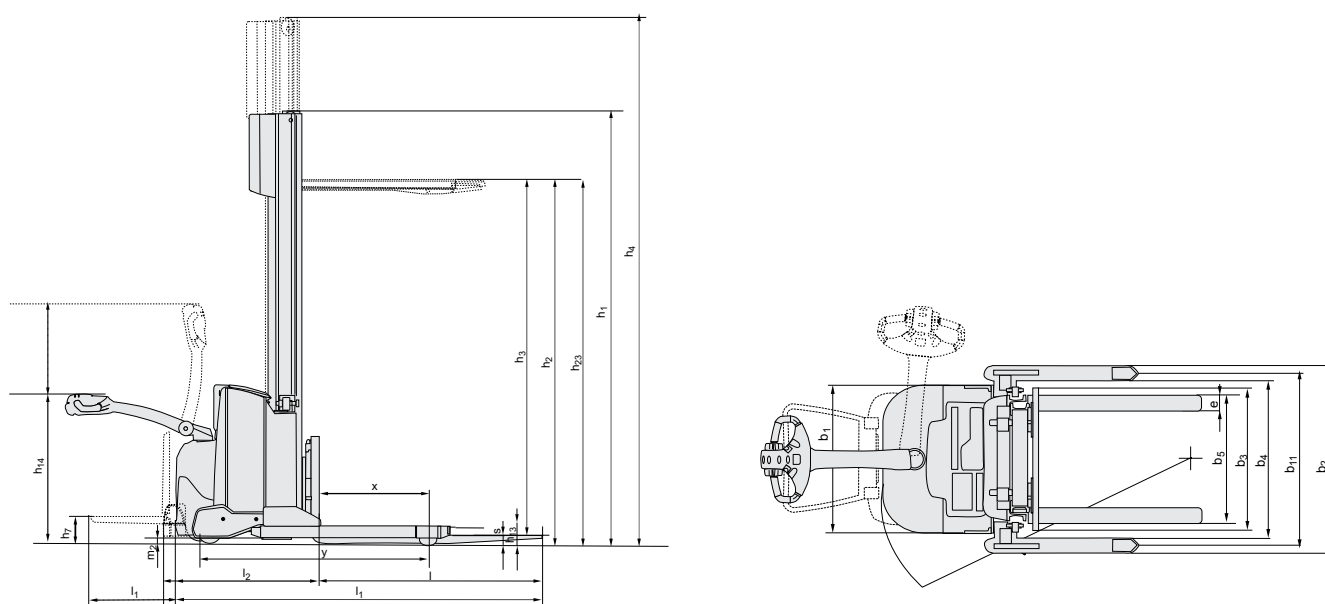
Truck performance and dimensions are nominal and subject to tolerances.

Products and specifications are subject to change without notice.





## CESAB S212S Dimensional Drawings



## Battery compartments

|                     |  |                  |          |      | S212S     |           |
|---------------------|--|------------------|----------|------|-----------|-----------|
| Battery change      |  |                  |          |      | Lift out  | Lift out  |
| Battery compartment |  |                  |          |      | Medium    | Large     |
| 1.9                 | Wheelbase                                      | y                | [mm]     |      | 1203      | 1253      |
| 4.19                | Overall length                                 | without platform | $l_1$    | [mm] | 1942      | 1992      |
|                     |  | platform up/down | $l_1$    | [mm] | 2027/2417 | 2077/2467 |
| 4.20                | Length to face of forks                        | without platform | $l_2$    | [mm] | 792       | 842       |
|                     |  | platform up/down | $l_2$    | [mm] | 877/1267  | 927/1317  |
| 4.33                | Aisle width for pallets<br>1000x1200 crossways | without platform | $A_{st}$ | [mm] | 2297      | 2347      |
|                     |  | platform up/down | $A_{st}$ | [mm] | 2382/2782 | 2432/2832 |
| 4.34                | Aisle width for pallets<br>800x1200 lengthways | without platform | $A_{st}$ | [mm] | 2307      | 2357      |
|                     |  | platform up/down | $A_{st}$ | [mm] | 2392/2792 | 2442/2842 |
| 4.35                | Turning radius                                 | without platform | $W_g$    | [mm] | 1353      | 1403      |
|                     |  | platform up/down | $W_g$    | [mm] | 1438/1838 | 1488/1888 |
| 6.4                 | Battery voltage, nominal capacity $K_5$        |                  | [V/Ah]   |      | 24/225    | 24/300    |
| 6.5                 | Battery weight, min.-max.                      |                  | kg       |      | 189-250   | 230-280   |

## Mast Specifications

| S212S    |                                   |      | Simplex |      | Duplex Tele |      |      |      | Duplex Tele Open View |      |      |      | Duplex Freelift |      |      |      | Triplex Freelift |      |      |      |      |      |      |      |
|----------|-----------------------------------|------|---------|------|-------------|------|------|------|-----------------------|------|------|------|-----------------|------|------|------|------------------|------|------|------|------|------|------|------|
| $h_{23}$ | Lift height ( $h_{13}+h_3$ )      | [mm] | 1355    | 1655 | 2655        | 2855 | 3255 | 3655 | 4105                  | 2655 | 2855 | 3255 | 3655            | 4105 | 2655 | 2855 | 3255             | 3655 | 4105 | 3255 | 3655 | 4105 | 4455 | 4755 |
| $h_3$    | Lift                              | [mm] | 1305    | 1605 | 2605        | 2805 | 3205 | 3605 | 4005                  | 2605 | 2805 | 3205 | 3605            | 4005 | 2605 | 2805 | 3205             | 3605 | 4005 | 3205 | 3605 | 4005 | 4405 | 4705 |
| $h_1$    | Height, mast lowered              | [mm] | 1822    | 2122 | 1837        | 1937 | 2137 | 2337 | 2562                  | 1832 | 1932 | 2132 | 2332            | 2557 | 1832 | 1932 | 2132             | 2332 | 2557 | 1692 | 1826 | 1976 | 2092 | 2192 |
| $h_2$    | Free lift, ground to top of forks | [mm] | 1355    | 1655 | 126         | 126  | 126  | 126  | 126                   | 126  | 126  | 126  | 126             | 126  | 1380 | 1480 | 1680             | 1880 | 2104 | 1230 | 1364 | 1514 | 1630 | 1730 |
| $h_1$    | Height, mast extended             | [mm] | 1901    | 2201 | 3205        | 3405 | 3805 | 4205 | 4655                  | 3205 | 3405 | 3805 | 4205            | 4655 | 3226 | 3426 | 3826             | 4226 | 4676 | 3822 | 4224 | 4674 | 5022 | 5322 |

## CESAB S215 - S216 - 220 Truck Specifications

| CHARACTERISTICS  |   |                 |            |                                |
|------------------|---|-----------------|------------|--------------------------------|
| 1.1              | Manufacturer  |                 | CESAB      | CESAB                          |
| 1.2              | Model   |                 | S215       | S216                           |
| 1.3              | Drive   |                 | Electric   | Electric                       |
| 1.4              | Operator type   |                 | Pedestrian | Pedestrian                     |
| 1.5              | Load capacity/rated load                                    | Q               | [kg]       | 1450                           |
| 1.6              | Load centre   | c               | [mm]       | 600                            |
| 1.8              | Load distance, centre of support arm wheel to face of forks | x               | [mm]       | 649                            |
| 1.9              | Wheelbase   | y               | [mm]       | 1344                           |
| 1.600            |   |                 |            | 1600                           |
| 2000             |   |                 |            | 2000                           |
| WEIGHT           |   |                 |            |                                |
| 2.1              | Service weight including battery                            |                 | [kg]       | 1439                           |
| 2.2              | Axle load, with load, drive/castor/support arm wheel        |                 | [kg]       | 510/481/1898                   |
| 2.3              | Axle load, without load, drive/castor/support arm wheel     |                 | [kg]       | 360/578/501                    |
| 380/558/501      |   |                 |            | 380/558/501                    |
| 360/704/596      |   |                 |            | 360/704/596                    |
| WHEELS           |   |                 |            |                                |
| 3.1              | Drive/castor/fork wheel                                     |                 |            | Friction/Vulkollan®/Vulkollan® |
| 3.2              | Wheel size, front   |                 | [mm]       | Ø 230                          |
| 3.3              | Wheel size, rear  |                 | [mm]       | Ø 85                           |
| 3.4              | Additional wheels (dimensions)                              |                 | [mm]       | Ø 125                          |
| 3.5              | Wheels, number front/rear (x=driven wheels)                 |                 |            | 1x + 2 / 4                     |
| 3.6              | Track width, front  | b <sub>10</sub> | [mm]       | 585                            |
| 3.7              | Track width, rear   | b <sub>11</sub> | [mm]       | 370                            |
| 390              |   |                 |            | 390                            |
| DIMENSIONS       |   |                 |            |                                |
| 4.2              | Height, mast lowered  | h <sub>1</sub>  | [mm]       | 1946                           |
| 4.3              | Free lift   | h <sub>2</sub>  | [mm]       | 1666                           |
| 4.4              | Lift  | h <sub>3</sub>  | [mm]       | 4060                           |
|                  | Lift height   | h <sub>23</sub> | [mm]       | 4150                           |
| 4.5              | Height, mast extended                                       | h <sub>4</sub>  | [mm]       | 5056                           |
| 4.9              | Height of tiller in drive position, min./max.               | h <sub>14</sub> | [mm]       | 869/1294                       |
| 4.15             | Height, fork lowered  | h <sub>13</sub> | [mm]       | 90                             |
| 4.19             | Overall length  | l <sub>1</sub>  | [mm]       | 1999                           |
| 4.20             | Length to face of forks                                     | l <sub>2</sub>  | [mm]       | 849                            |
| 4.21             | Overall width   | b <sub>1</sub>  | [mm]       | 790/—                          |
| 4.22             | Fork dimensions   | s/e/l           | [mm]       | 70/180/1150                    |
| 4.25             | Width over forks  | b <sub>5</sub>  | [mm]       | 570                            |
| 4.32             | Ground clearance, centre of wheelbase                       | m <sub>2</sub>  | [mm]       | 27,5                           |
| 4.33             | Aisle width for pallets 1000x1200 crossways                 | A <sub>st</sub> | [mm]       | 2486                           |
| 4.34             | Aisle width for pallets 800x1200 lengthways                 | A <sub>st</sub> | [mm]       | 2385                           |
| 4.35             | Turning radius  | W <sub>a</sub>  | [mm]       | 1504                           |
| PERFORMANCE DATA |   |                 |            |                                |
| 5.1              | Travel speed, with/without load                             |                 | [km/h]     | 6,0/6,0                        |
| 5.2              | Lift speed, with/without load                               |                 | [m/s]      | 0,17/0,33                      |
| 5.3              | Lowering speed, with/without load                           |                 | [m/s]      | 0,45/0,45                      |
| 5.8              | Max. gradeability, with/without load <sup>1)</sup>          |                 | [%]        | 8/12                           |
| 5.9              | Acceleration time (over 10 m)                               |                 | [s]        | 7,1                            |
| 5.10             | Service brake   |                 |            | Electromagnetic                |
| ELECTRIC MOTOR   |   |                 |            |                                |
| 6.1              | Drive motor rating S2 60 min                                |                 | [kW]       | 1,8                            |
| 6.2              | Lift motor rating at S3 15%                                 |                 | [kW]       | 3                              |
| 6.4              | Battery voltage/nominal capacity K <sub>5</sub>             |                 | [V/Ah]     | 24/300                         |
| 6.5              | Battery weight  |                 | [kg]       | 195-270                        |
| 6.6              | Energy consumption acc to VDI cycle                         |                 | [kW/h/h]   | 1,078                          |
| OTHERS           |   |                 |            |                                |
| 8.1              | Type of drive control                                       |                 |            | CESAB Drive Control            |
| 8.4              | Sound level at the driver's ear according to EN 12 053      |                 | [dB (A)]   | 66                             |
| 67               |   |                 |            | 67                             |

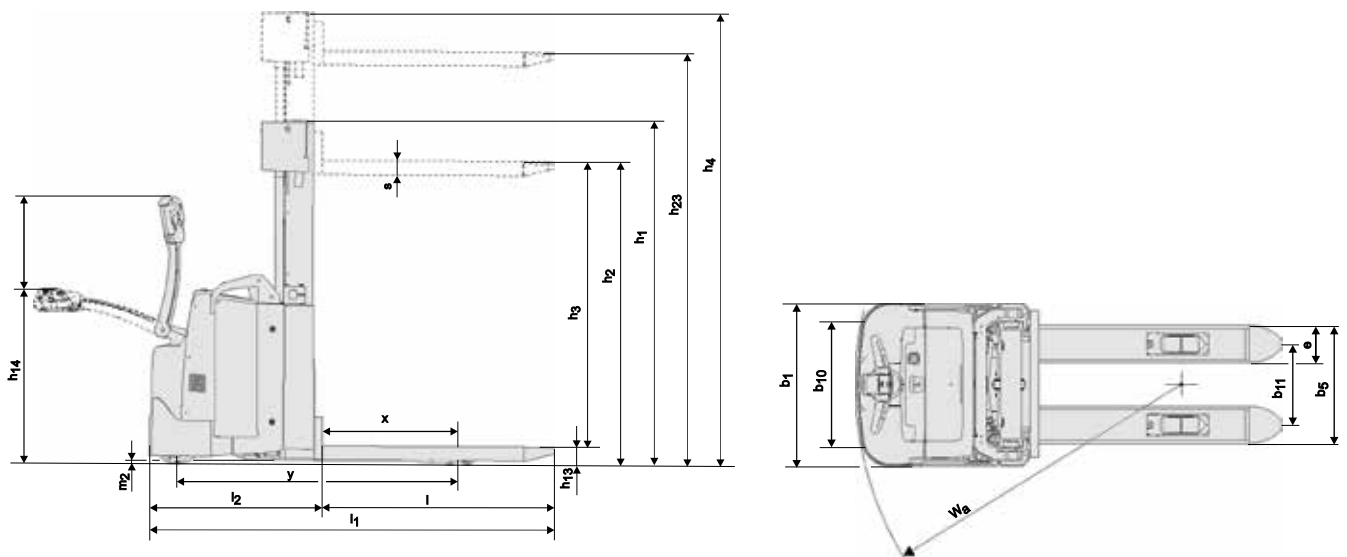
<sup>1)</sup> Measured according to company standard

Data is based on standard configurations.

Truck performance and dimensions are nominal and subject to tolerances.  
Products and specifications are subject to change without notice.



## CESAB S215 - S216 - S220 Dimensional Drawings



## Battery compartments

|                     |  | S215                 |         |          |         | S216     |         |          |         | S220     |         |          |         |
|---------------------|--|----------------------|---------|----------|---------|----------|---------|----------|---------|----------|---------|----------|---------|
| Battery change      |  | Lift out             |         | Sideways |         | Lift out |         | Sideways |         | Lift out |         | Sideways |         |
| Battery compartment |  | S                    | L       | S        | L       | S        | L       | S        | L       | S        | L       | S        | L       |
| 1.9                 | Wheelbase  | y [mm]               | 1344    | 1441     | 1344    | 1441     | 1344    | 1441     | 1344    | 1344     | 1441    | 1344     | 1441    |
| 4.19                | Overall length                                   | l <sub>1</sub> [mm]  | 1999    | 2096     | 1999    | 2096     | 1999    | 2096     | 1999    | 2010     | 2107    | 2010     | 2107    |
| 4.20                | Length to face of forks                          | l <sub>2</sub> [mm]  | 849     | 946      | 849     | 946      | 849     | 946      | 849     | 860      | 957     | 860      | 957     |
| 4.33                | Aisle width for pallets 1000x1200 crossways      | A <sub>st</sub> [mm] | 2486    | 2582     | 2486    | 2582     | 2486    | 2582     | 2486    | 2493     | 2589    | 2493     | 2589    |
| 4.34                | Aisle width for pallets 800x1200 lengthways      | A <sub>st</sub> [mm] | 2385    | 2481     | 2385    | 2481     | 2385    | 2481     | 2385    | 2394     | 2490    | 2394     | 2490    |
| 4.35                | Turning radius                                   | W <sub>a</sub> [mm]  | 1504    | 1600     | 1504    | 1600     | 1504    | 1600     | 1504    | 1504     | 1600    | 1504     | 1600    |
| 6.4                 | Battery voltage, nominal capacity K <sub>s</sub> | [V/Ah]               | 24/300  | 24/500   | 24/300  | 24/500   | 24/300  | 24/500   | 24/300  | 24/300   | 24/500  | 24/300   | 24/500  |
| 6.5                 | Battery weight, min.—max.                        | [kg]                 | 195-270 | 345-403  | 195-270 | 345-403  | 195-270 | 345-403  | 195-270 | 345-403  | 345-403 | 195-270  | 345-403 |

## Mast Specifications

| S215            |  |      | Duplex Tele Open View |      |      |      |      | Duplex Freelift |      |      |      |      |      | Triplex Freelift |      |      |      |      |      |      |      |      |
|-----------------|--|------|-----------------------|------|------|------|------|-----------------|------|------|------|------|------|------------------|------|------|------|------|------|------|------|------|
| h <sub>23</sub> | Lift height (h <sub>13</sub> +h <sub>3</sub> ) | [mm] | 2350                  | 2800 | 3300 | 3700 | 4150 | 1950            | 2350 | 2500 | 2800 | 3300 | 3700 | 4150             | 3300 | 3700 | 3950 | 4150 | 4500 | 4800 | 5400 | 6000 |
| h <sub>3</sub>  | Lift   | [mm] | 2260                  | 2710 | 3210 | 3610 | 4060 | 1860            | 2260 | 2410 | 2710 | 3210 | 3610 | 4060             | 3210 | 3610 | 3860 | 4060 | 4410 | 4710 | 5310 | —    |
| h <sub>1</sub>  | Height, mast lowered                           | [mm] | 1652                  | 1877 | 2127 | 2327 | 2552 | 1536            | 1652 | 1727 | 1877 | 2127 | 2327 | 2552             | 1662 | 1796 | 1879 | 1946 | 2062 | 2162 | 2362 | —    |
| h <sub>2</sub>  | Free lift, ground to top of forks              | [mm] | —                     | —    | —    | —    | —    | 1056            | 1354 | 1430 | 1580 | 1830 | 2030 | 2254             | 1382 | 1516 | 1598 | 1666 | 1782 | 1882 | 2082 | —    |
| h <sub>4</sub>  | Height, mast extended                          | [mm] | 2892                  | 3342 | 3842 | 4242 | 4692 | 2491            | 2891 | 3041 | 3341 | 3841 | 4241 | 4691             | 3816 | 4218 | 4467 | 4668 | 5016 | 5316 | 5916 | —    |
| S216            |  |      | Duplex Tele Open View |      |      |      |      | Duplex Freelift |      |      |      |      |      | Triplex Freelift |      |      |      |      |      |      |      |      |
| h <sub>23</sub> | Lift height (h <sub>13</sub> +h <sub>3</sub> ) | [mm] | 2350                  | 2800 | 3300 | 3700 | 4150 | 1950            | 2350 | 2500 | 2800 | 3300 | 3700 | 4150             | 3300 | 3700 | 3950 | 4150 | 4500 | 4800 | 5400 | 6000 |
| h <sub>3</sub>  | Lift   | [mm] | 2260                  | 2710 | 3210 | 3610 | 4060 | 1860            | 2260 | 2410 | 2710 | 3210 | 3610 | 4060             | 3210 | 3610 | 3860 | 4060 | 4410 | 4710 | 5310 | 5910 |
| h <sub>1</sub>  | Height, mast lowered                           | [mm] | 1737                  | 1962 | 2212 | 2412 | 2637 | 1536            | 1736 | 1811 | 1961 | 2211 | 2411 | 2636             | 1662 | 1796 | 1879 | 1946 | 2062 | 2162 | 2362 | 2562 |
| h <sub>2</sub>  | Free lift, ground to top of forks              | [mm] | —                     | —    | —    | —    | —    | 1056            | 1256 | 1332 | 1482 | 1732 | 1932 | 2156             | 1382 | 1516 | 1598 | 1666 | 1782 | 1882 | 2082 | 2284 |
| h <sub>4</sub>  | Height, mast extended                          | [mm] | 2892                  | 3342 | 3842 | 4242 | 4692 | 2491            | 2891 | 3041 | 3341 | 3841 | 4241 | 4691             | 3816 | 4218 | 4467 | 4668 | 5016 | 5316 | 5916 | 6520 |
| S220            |  |      | Duplex Tele Open View |      |      |      |      | Duplex Freelift |      |      |      |      |      | Triplex Freelift |      |      |      |      |      |      |      |      |
| h <sub>23</sub> | Lift height (h <sub>13</sub> +h <sub>3</sub> ) | [mm] | 2150                  | 2600 | 3100 | 3500 | 3950 | 2150            | 2300 | 2600 | 3100 | 3500 | 3950 | 3200             | 3600 | 3850 | 4050 |      |      |      |      |      |
| h <sub>3</sub>  | Lift   | [mm] | 2060                  | 2510 | 3010 | 3410 | 3860 | 2060            | 2210 | 2510 | 3010 | 3410 | 3860 | 3110             | 3510 | 3760 | 3960 |      |      |      |      |      |
| h <sub>1</sub>  | Height, mast lowered                           | [mm] | 1737                  | 1962 | 2212 | 2412 | 2637 | 1737            | 1812 | 1962 | 2212 | 2412 | 2637 | 1662             | 1796 | 1879 | 1946 |      |      |      |      |      |
| h <sub>2</sub>  | Free lift, ground to top of forks              | [mm] | —                     | —    | —    | —    | —    | 1344            | 1420 | 1570 | 1820 | 2020 | 2244 | 1282             | 1416 | 1498 | 1566 |      |      |      |      |      |
| h <sub>4</sub>  | Height, mast extended                          | [mm] | 2792                  | 3242 | 3742 | 4142 | 4592 | 2792            | 2942 | 3242 | 3742 | 4142 | 4592 | 3816             | 4218 | 4467 | 4668 |      |      |      |      |      |

## CESAB S215L - S216L - S220L Truck Specifications

| CHARACTERISTICS  |   |                                |          | Elevating Support Arms         | Elevating Support Arms | Elevating Support Arms |
|------------------|---|--------------------------------|----------|--------------------------------|------------------------|------------------------|
| 1.1              | Manufacturer  |                                |          | CESAB                          | CESAB                  | CESAB                  |
| 1.2              | Model   |                                |          | S215L                          | S216L                  | S220L                  |
| 1.3              | Drive   |                                |          | Electric                       | Electric               | Electric               |
| 1.4              | Operator type   |                                |          | Pedestrian                     | Pedestrian             | Pedestrian             |
| 1.5              | Load capacity/rated load                                    | Q                              | [kg]     | 1450                           | 1600                   | 2000                   |
|                  | Support arm capacity  | Q                              | [kg]     | 2000                           | 2000                   | 2000                   |
| 1.6              | Load centre   | c                              | [mm]     | 600                            | 600                    | 600                    |
| 1.8              | Load distance, centre of support arm wheel to face of forks |                                |          |                                |                        |                        |
|                  | raised support arms   | x                              | [mm]     | 661                            | 661                    | 644                    |
|                  | lowered support arms  | x                              | [mm]     | 692                            | 692                    | 675                    |
| 1.9              | Wheelbase, raised support arms                              | y                              | [mm]     | 1397                           | 1397                   | 1397                   |
|                  | Wheelbase, lowered support arms                             | y                              | [mm]     | 1428                           | 1428                   | 1428                   |
| WEIGHT           |   |                                |          |                                |                        |                        |
| 2.1              | Service weight including battery                            |                                | [kg]     | 1439                           | 1439                   | 1660                   |
| 2.2              | Axle load, with load, drive/castor/support arm wheel        |                                | [kg]     | 540/495/1854                   | 560/484/1995           | 670/512/2478           |
| 2.3              | Axle load, without load, drive/castor/support arm wheel     |                                | [kg]     | 400/545/494                    | 400/545/494            | 400/674/586            |
| WHEELS           |   |                                |          |                                |                        |                        |
| 3.1              | Drive/castor/fork wheel                                     |                                |          | Friction/Vulkollan®/Vulkollan® |                        |                        |
| 3.2              | Wheel size, front   |                                | [mm]     | Ø 230                          | Ø 230                  | Ø 230                  |
| 3.3              | Wheel size, rear  |                                | [mm]     | Ø 85                           | Ø 85                   | Ø 85                   |
| 3.4              | Additional wheels (dimensions)                              |                                | [mm]     | Ø 125                          | Ø 125                  | Ø 125                  |
| 3.5              | Wheels, number front/rear (x=driven wheels)                 |                                |          | 1x + 2 / 4                     | 1x + 2 / 4             | 1x + 2 / 4             |
| 3.6              | Track width, front  | b <sub>10</sub>                | [mm]     | 585                            | 585                    | 585                    |
| 3.7              | Track width, rear   | b <sub>11</sub>                | [mm]     | 370                            | 370                    | 390                    |
| DIMENSIONS       |   |                                |          |                                |                        |                        |
| 4.2              | Height, mast lowered  | h <sub>1</sub>                 | [mm]     | 1946                           | 1946                   | 1946                   |
| 4.3              | Free lift   | h <sub>2</sub>                 | [mm]     | 1666                           | 1666                   | 1566                   |
| 4.4              | Lift  | h <sub>3</sub>                 | [mm]     | 4060                           | 4060                   | 3960                   |
|                  | Lift height   | h <sub>23</sub>                | [mm]     | 4150                           | 4150                   | 4050                   |
| 4.5              | Height, mast extended                                       | h <sub>4</sub>                 | [mm]     | 5056                           | 5056                   | 5056                   |
| 4.6              | Initial lift  | h <sub>5</sub>                 | [mm]     | 120                            | 120                    | 120                    |
| 4.9              | Height of tiller in drive position, min./max.               | h <sub>14</sub>                | [mm]     | 869/1294                       | 869/1294               | 869/1294               |
| 4.15             | Height, fork lowered  | h <sub>13</sub>                | [mm]     | 90                             | 90                     | 90                     |
| 4.19             | Overall length  | l <sub>1</sub>                 | [mm]     | 2045                           | 2045                   | 2056                   |
| 4.20             | Length to face of forks                                     | l <sub>2</sub>                 | [mm]     | 895                            | 895                    | 906                    |
| 4.21             | Overall width   | b <sub>1</sub> /b <sub>2</sub> | [mm]     | 790/—                          | 790/—                  | 790/—                  |
| 4.22             | Fork dimensions   | s/e/l                          | [mm]     | 70/180/1150                    | 70/180/1150            | 70/185/1150            |
| 4.25             | Width over forks  | b <sub>5</sub>                 | [mm]     | 570                            | 570                    | 575                    |
| 4.32             | Ground clearance, centre of wheelbase                       | m <sub>2</sub>                 | [mm]     | 19,5                           | 19,5                   | 19,5                   |
| 4.33             | Aisle width for pallets 1000x1200 crossways                 | A <sub>st</sub>                | [mm]     | 2448                           | 2448                   | 2458                   |
| 4.34             | Aisle width for pallets 800x1200 lengthways                 | A <sub>st</sub>                | [mm]     | 2340                           | 2340                   | 2353                   |
| 4.35             | Turning radius  | W <sub>a</sub>                 | [mm]     | 1493                           | 1493                   | 1590                   |
| PERFORMANCE DATA |   |                                |          |                                |                        |                        |
| 5.1              | Travel speed, with/without load                             |                                | [km/h]   | 6,0/6,0                        | 6,0/6,0                | 6,0/6,0                |
| 5.2              | Lift speed, with/without load                               |                                | [m/s]    | 0,17/0,33                      | 0,15/0,31              | 0,13/0,24              |
| 5.3              | Lowering speed, with/without load                           |                                | [m/s]    | 0,45/0,45                      | 0,45/0,45              | 0,38/0,45              |
| 5.8              | Max. gradeability, with/without load                        |                                | [%]      | 7/12 <sup>1)</sup>             | 7/12 <sup>1)</sup>     | 7/12 <sup>1)</sup>     |
| 5.9              | Acceleration time (over 10 m)                               |                                | [s]      | 7,1                            | 7,2                    | 7,4                    |
| 5.10             | Service brake   |                                |          | Electromagnetic                | Electromagnetic        | Electromagnetic        |
| ELECTRIC MOTOR   |   |                                |          |                                |                        |                        |
| 6.1              | Drive motor rating S2 60 min                                |                                | [kW]     | 1,8                            | 1,8                    | 1,8                    |
| 6.2              | Lift motor rating at S3 15%                                 |                                | [kW]     | 3                              | 3                      | 3                      |
| 6.4              | Battery voltage/nominal capacity K <sub>s</sub>             |                                | [V/Ah]   | 24/300                         | 24/300                 | 24/300                 |
| 6.5              | Battery weight  |                                | [kg]     | 195-270                        | 195-270                | 195-270                |
| 6.6              | Energy consumption acc to VDI cycle                         |                                | [kW/h/h] | 1,078                          | 1,078                  |                        |
| OTHERS           |   |                                |          |                                |                        |                        |
| 8.1              | Type of drive control                                       |                                |          | CESAB Drive Control            | CESAB Drive Control    | CESAB Drive Control    |
| 8.4              | Sound level at the driver's ear according to EN 12 053      |                                | [dB (A)] | 66                             | 66                     | 67                     |

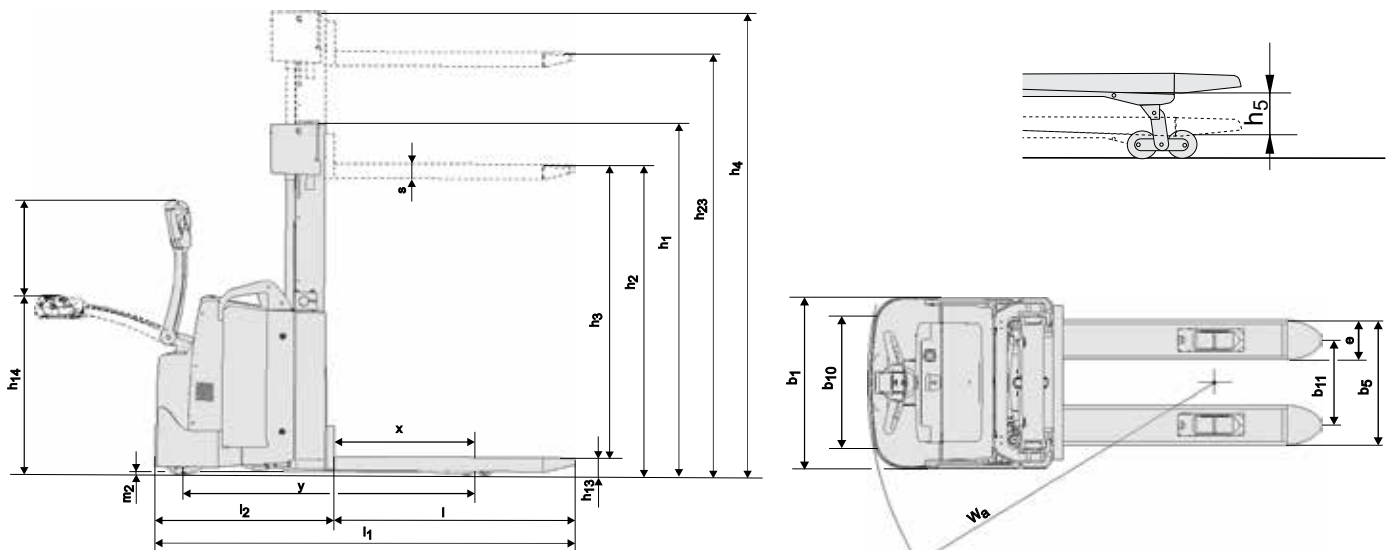
<sup>1)</sup> Measured according to company standard. 8/12 with 1600 kg on the support arms.

Data is based on standard configurations.

Truck performance and dimensions are nominal and subject to tolerances.  
Products and specifications are subject to change without notice.



## CESAB S215L - S216L - S220L Dimensional Drawings



## Battery compartments

|  |                      | S215L    |         |          |         | S216L    |         |          |         | S220L    |         |          |         |
|--|----------------------|----------|---------|----------|---------|----------|---------|----------|---------|----------|---------|----------|---------|
| Battery change                                       |                      | Lift out |         | Sideways |         | Lift out |         | Sideways |         | Lift out |         | Sideways |         |
| Battery compartment                                  |                      | S        | L       | S        | L       | S        | L       | S        | L       | S        | L       | S        | L       |
| 1.9 Wheelbase raised support arms                    | y [mm]               | 1397     | 1494    | 1397     | 1494    | 1397     | 1494    | 1397     | 1494    | 1397     | 1494    | 1397     | 1494    |
| Wheelbase lowered support arms                       | y [mm]               | 1428     | 1525    | 1428     | 1525    | 1428     | 1525    | 1428     | 1525    | 1428     | 1525    | 1428     | 1525    |
| 4.19 Overall length                                  | l <sub>1</sub> [mm]  | 2045     | 2142    | 2045     | 2142    | 2045     | 2142    | 2045     | 2142    | 2056     | 2153    | 2056     | 2153    |
| 4.20 Length to face of forks                         | l <sub>2</sub> [mm]  | 895      | 992     | 895      | 992     | 895      | 992     | 895      | 992     | 906      | 1003    | 906      | 1003    |
| 4.33 Aisle width for pallets 1000x1200 crossways     | A <sub>st</sub> [mm] | 2448     | 2545    | 2448     | 2545    | 2448     | 2545    | 2448     | 2545    | 2458     | 2555    | 2458     | 2555    |
| 4.34 Aisle width for pallets 800x1200 lengthways     | A <sub>st</sub> [mm] | 2340     | 2437    | 2340     | 2437    | 2340     | 2437    | 2340     | 2437    | 2353     | 2450    | 2353     | 2450    |
| 4.35 Turning radius                                  | W <sub>a</sub> [mm]  | 1493     | 1590    | 1493     | 1590    | 1493     | 1590    | 1493     | 1590    | 1493     | 1590    | 1493     | 1590    |
| 6.4 Battery voltage, nominal capacity K <sub>5</sub> | [V/Ah]               | 24/300   | 24/500  | 24/300   | 24/500  | 24/300   | 24/500  | 24/300   | 24/500  | 24/300   | 24/500  | 24/300   | 24/500  |
| 6.5 Battery weight, min.—max.                        | [kg]                 | 195-270  | 345-403 | 195-270  | 345-403 | 195-270  | 345-403 | 195-270  | 345-403 | 195-270  | 345-403 | 195-270  | 345-403 |

## Mast Specifications

| S215L           |  |      | Duplex Tele Open View |      |      |      |      | Duplex Freelift |      |      |      |      |      |      | Triplex Freelift |      |      |      |      |      |      |      |
|-----------------|--|------|-----------------------|------|------|------|------|-----------------|------|------|------|------|------|------|------------------|------|------|------|------|------|------|------|
| h <sub>23</sub> | Lift height (h <sub>13</sub> +h <sub>3</sub> ) | [mm] | 2350                  | 2800 | 3300 | 3700 | 4150 | 1950            | 2350 | 2500 | 2800 | 3300 | 3700 | 4150 | 3300             | 3700 | 3950 | 4150 | 4500 | 4800 | 5400 | 6000 |
| h <sub>3</sub>  | Lift   | [mm] | 2260                  | 2710 | 3210 | 3610 | 4060 | 1860            | 2260 | 2410 | 2710 | 3210 | 3610 | 4060 | 3210             | 3610 | 3860 | 4060 | 4410 | 4710 | 5310 | —    |
| h <sub>1</sub>  | Height, mast lowered                           | [mm] | 1652                  | 1877 | 2127 | 2327 | 2552 | 1536            | 1652 | 1727 | 1877 | 2127 | 2327 | 2552 | 1662             | 1796 | 1879 | 1946 | 2062 | 2162 | 2362 | —    |
| h <sub>2</sub>  | Free lift, ground to top of forks              | [mm] | —                     | —    | —    | —    | —    | 1056            | 1354 | 1430 | 1580 | 1830 | 2030 | 2254 | 1382             | 1516 | 1598 | 1666 | 1782 | 1882 | 2082 | —    |
| h <sub>4</sub>  | Height, mast extended                          | [mm] | 2892                  | 3342 | 3842 | 4242 | 4692 | 2491            | 2891 | 3041 | 3341 | 3841 | 4241 | 4691 | 3816             | 4218 | 4467 | 4668 | 5016 | 5316 | 5916 | —    |
| S216L           |  |      | Duplex Tele Open View |      |      |      |      | Duplex Freelift |      |      |      |      |      |      | Triplex Freelift |      |      |      |      |      |      |      |
| h <sub>23</sub> | Lift height (h <sub>13</sub> +h <sub>3</sub> ) | [mm] | 2350                  | 2800 | 3300 | 3700 | 4150 | 1950            | 2350 | 2500 | 2800 | 3300 | 3700 | 4150 | 3300             | 3700 | 3950 | 4150 | 4500 | 4800 | 5400 | 6000 |
| h <sub>3</sub>  | Lift   | [mm] | 2260                  | 2710 | 3210 | 3610 | 4060 | 1860            | 2260 | 2410 | 2710 | 3210 | 3610 | 4060 | 3210             | 3610 | 3860 | 4060 | 4410 | 4710 | 5310 | 5910 |
| h <sub>1</sub>  | Height, mast lowered                           | [mm] | 1737                  | 1962 | 2212 | 2412 | 2637 | 1536            | 1736 | 1811 | 1961 | 2211 | 2411 | 2636 | 1662             | 1796 | 1879 | 1946 | 2062 | 2162 | 2362 | 2562 |
| h <sub>2</sub>  | Free lift, ground to top of forks              | [mm] | —                     | —    | —    | —    | —    | 1056            | 1256 | 1332 | 1482 | 1732 | 1932 | 2156 | 1382             | 1516 | 1598 | 1666 | 1782 | 1882 | 2082 | 2284 |
| h <sub>4</sub>  | Height, mast extended                          | [mm] | 2892                  | 3342 | 3842 | 4242 | 4692 | 2491            | 2891 | 3041 | 3341 | 3841 | 4241 | 4691 | 3816             | 4218 | 4467 | 4668 | 5016 | 5316 | 5916 | 6520 |
| S220L           |  |      | Duplex Tele Open View |      |      |      |      | Duplex Freelift |      |      |      |      |      |      | Triplex Freelift |      |      |      |      |      |      |      |
| h <sub>23</sub> | Lift height (h <sub>13</sub> +h <sub>3</sub> ) | [mm] | 2150                  | 2600 | 3100 | 3500 | 3950 | 2150            | 2300 | 2600 | 3100 | 3500 | 3950 | 3200 | 3600             | 3850 | 4050 |      |      |      |      |      |
| h <sub>3</sub>  | Lift   | [mm] | 2060                  | 2510 | 3010 | 3410 | 3860 | 2060            | 2210 | 2510 | 3010 | 3410 | 3860 | 3110 | 3510             | 3760 | 3960 |      |      |      |      |      |
| h <sub>1</sub>  | Height, mast lowered                           | [mm] | 1737                  | 1962 | 2212 | 2412 | 2637 | 1737            | 1812 | 1962 | 2212 | 2412 | 2637 | 1662 | 1796             | 1879 | 1946 |      |      |      |      |      |
| h <sub>2</sub>  | Free lift, ground to top of forks              | [mm] | —                     | —    | —    | —    | —    | 1344            | 1420 | 1570 | 1820 | 2020 | 2244 | 1282 | 1416             | 1498 | 1566 |      |      |      |      |      |
| h <sub>4</sub>  | Height, mast extended                          | [mm] | 2792                  | 3242 | 3742 | 4142 | 4592 | 2792            | 2942 | 3242 | 3742 | 4142 | 4592 | 3816 | 4218             | 4467 | 4668 |      |      |      |      |      |

## CESAB S214S Truck Specifications

| CHARACTERISTICS  |   |                                |          | Straddle Support Arms          |
|------------------|---|--------------------------------|----------|--------------------------------|
| 1.1              | Manufacturer  |                                |          | CESAB                          |
| 1.2              | Model   |                                |          | S214S                          |
| 1.3              | Drive   |                                |          | Electric                       |
| 1.4              | Operator type   |                                |          | Pedestrian                     |
| 1.5              | Load capacity/rated load                                    | Q                              | [kg]     | 1400                           |
| 1.6              | Load centre   | c                              | [mm]     | 600                            |
| 1.8              | Load distance, centre of support arm wheel to face of forks | x                              | [mm]     | 758                            |
| 1.9              | Wheelbase   | y                              | [mm]     | 1443                           |
| WEIGHT           |   |                                |          |                                |
| 2.1              | Service weight including battery                            |                                | [kg]     | 1509                           |
| 2.2              | Axle load, with load, drive/castor/support arm wheel        |                                | [kg]     | 510/625/1774                   |
| 2.3              | Axle load, without load, drive/castor/support arm wheel     |                                | [kg]     | 360/630/519                    |
| WHEELS           |   |                                |          |                                |
| 3.1              | Drive/support arm wheel                                     |                                |          | Friction/Vulkollan®/Vulkollan® |
| 3.2              | Wheel size, front   |                                | [mm]     | Ø 230                          |
| 3.3              | Wheel size, rear  |                                | [mm]     | Ø 140/ Ø 85                    |
| 3.4              | Additional wheel size                                       |                                | [mm]     | Ø 125                          |
| 3.5              | Wheels, number front/rear (x=driven wheels)                 |                                |          | 1x + 2 / 2 or 4                |
| 3.6              | Track width, front  |                                | [mm]     | 585                            |
| 3.7              | Track width, rear   | b <sub>11</sub>                | [mm]     | 985                            |
| DIMENSIONS       |   |                                |          |                                |
| 4.2              | Height, mast lowered  | h <sub>1</sub>                 | [mm]     | 1946                           |
| 4.3              | Free lift   | h <sub>2</sub>                 | [mm]     | 1666                           |
| 4.4              | Lift  | h <sub>3</sub>                 | [mm]     | 4060                           |
|                  | Lift height   | h <sub>23</sub>                | [mm]     | 4100                           |
| 4.5              | Height, mast extended                                       | h <sub>4</sub>                 | [mm]     | 5056                           |
| 4.9              | Height of tiller in drive position, min./max.               | h <sub>14</sub>                | [mm]     | 869/1294                       |
| 4.10             | Height of support arm                                       | h <sub>10</sub>                | [mm]     | 140 or 93                      |
| 4.15             | Height, fork lowered  | h <sub>13</sub>                | [mm]     | 50                             |
| 4.19             | Overall length  | l <sub>1</sub>                 | [mm]     | 2041                           |
| 4.20             | Length to face of forks                                     | l <sub>2</sub>                 | [mm]     | 891                            |
| 4.21             | Overall width   | b <sub>1</sub> /b <sub>2</sub> | [mm]     | 790/1172                       |
| 4.22             | Fork dimensions   | s/e/l                          | [mm]     | 40/100/1150                    |
| 4.25             | Width over forks  | b <sub>5</sub>                 | [mm]     | 250-890                        |
| 4.26             | Distance between support arms                               | b <sub>4</sub>                 | [mm]     | 900                            |
| 4.32             | Ground clearance, centre of wheelbase                       | m <sub>2</sub>                 | [mm]     | 40/32,5                        |
| 4.33             | Aisle width for pallets 1000x1200 crossways                 | A <sub>st</sub>                | [mm]     | 2517                           |
| 4.34             | Aisle width for pallets 800x1200 lengthways                 | A <sub>st</sub>                | [mm]     | 2396                           |
| 4.35             | Turning radius  | W <sub>a</sub>                 | [mm]     | 1600                           |
| PERFORMANCE DATA |   |                                |          |                                |
| 5.1              | Travel speed, with/without load                             |                                | [km/h]   | 6,0/6,0                        |
| 5.2              | Lift speed, with/without load                               |                                | [m/s]    | 0,17/0,33                      |
| 5.3              | Lowering speed, with/without load                           |                                | [m/s]    | 0,45/0,45                      |
| 5.8              | Max. gradeability, with/without load <sup>1)</sup>          |                                | [%]      | 8/12                           |
| 5.9              | Acceleration time (over 10 m)                               |                                | [s]      | 7,1                            |
| 5.10             | Service brake   |                                |          | Electromagnetic                |
| ELECTRIC MOTOR   |   |                                |          |                                |
| 6.1              | Drive motor rating S2 60 min                                |                                | [kW]     | 1,8                            |
| 6.2              | Lift motor rating at S3 15%                                 |                                | [kW]     | 3                              |
| 6.4              | Battery voltage/nominal capacity K <sub>5</sub>             |                                | [V/Ah]   | 24/300                         |
| 6.5              | Battery weight  |                                | [kg]     | 195-270                        |
| 6.6              | Energy consumption acc to VDI cycle                         |                                | [kW/h/h] | 1,078                          |
| OTHERS           |   |                                |          |                                |
| 8.1              | Type of drive control                                       |                                |          | CESAB Drive Control            |
| 8.4              | Sound level at the driver's ear according to EN 12 053      |                                | [dB (A)] | 66                             |

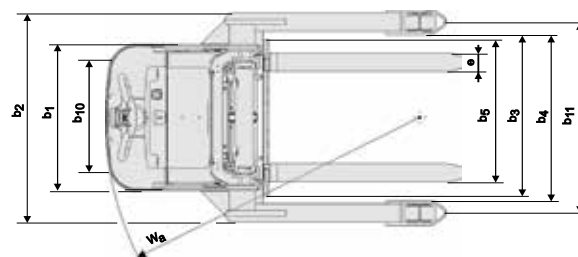
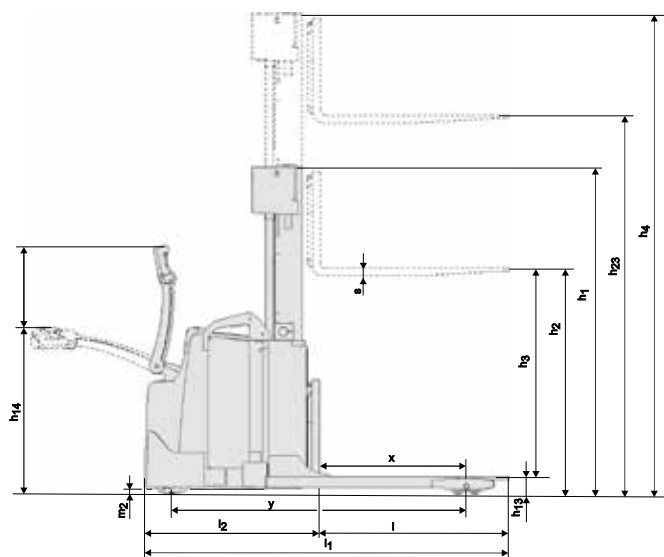
<sup>1)</sup> Measured according to company standard

Data is based on standard configurations.

Truck performance and dimensions are nominal and subject to tolerances.  
Products and specifications are subject to change without notice.



## CESAB S214S Dimensional Drawings



## Battery compartments

|                     |  |                      | S214S    |         |
|---------------------|--|----------------------|----------|---------|
|                     |  |                      | LIFT OUT |         |
| Battery change      |  |                      |          |         |
| Battery compartment |  |                      | S        | L       |
| 1.9                 | Wheelbase  | y [mm]               | 1443     | 1540    |
| 4.19                | Overall length                                   | l <sub>1</sub> [mm]  | 2041     | 2138    |
| 4.20                | Length to face of forks                          | l <sub>2</sub> [mm]  | 891      | 988     |
| 4.33                | Aisle width for pallets 1000x1200 crossways      | A <sub>st</sub> [mm] | 2517     | 2615    |
| 4.34                | Aisle width for pallets 800x1200 lengthways      | A <sub>st</sub> [mm] | 2396     | 2494    |
| 4.35                | Turning radius                                   | W <sub>a</sub> [mm]  | 1600     | 1698    |
| 6.4                 | Battery voltage, nominal capacity K <sub>s</sub> | [V/Ah]               | 24/300   | 24/500  |
| 6.5                 | Battery weight, min.—max.                        | kg                   | 195-270  | 345-403 |

## Mast Specifications

| S214S           |  |      | Duplex Tele Open View |      |      |      |      |      |      | Duplex Freelift |      |      |      |      |      |      | Triplex Freelift |      |      |  |  |  |  |
|-----------------|--|------|-----------------------|------|------|------|------|------|------|-----------------|------|------|------|------|------|------|------------------|------|------|--|--|--|--|
| h <sub>23</sub> | Lift height (h <sub>13</sub> +h <sub>3</sub> ) | [mm] | 2300                  | 2750 | 3250 | 3650 | 4100 | 2300 | 2450 | 2750            | 3250 | 3650 | 4100 | 3650 | 3900 | 4100 | 4450             | 4750 | 5350 |  |  |  |  |
| h <sub>3</sub>  | Lift   | [mm] | 2260                  | 2710 | 3210 | 3610 | 4060 | 2260 | 2410 | 2710            | 3210 | 3610 | 4060 | 3610 | 3860 | 4060 | 4410             | 4710 | 5310 |  |  |  |  |
| h <sub>1</sub>  | Height, mast lowered                           | [mm] | 1652                  | 1877 | 2127 | 2327 | 2552 | 1652 | 1727 | 1877            | 2127 | 2327 | 2552 | 1796 | 1879 | 1946 | 2062             | 2162 | 2362 |  |  |  |  |
| h <sub>2</sub>  | Free lift, ground to top of forks              | [mm] | —                     | —    | —    | —    | —    | 1354 | 1430 | 1580            | 1830 | 2030 | 2254 | 1516 | 1598 | 1666 | 1782             | 1882 | 2082 |  |  |  |  |
| h <sub>4</sub>  | Height, mast extended                          | [mm] | 2892                  | 3342 | 3842 | 4242 | 4692 | 2891 | 3041 | 3341            | 3841 | 4241 | 4691 | 4218 | 4467 | 4668 | 5016             | 5316 | 5916 |  |  |  |  |



The data in this specification sheet was determined based on our standard testing conditions. Operating performance may vary depending on the actual specification and condition of the truck as well as the condition of the operating area. Availability and specifications are determined regionally and are subject to change without notice. Please consult your authorised CESAB dealership for further details. SPEC\_S200\_EN\_2015 / P&B S200 V22 – Copyright CESAB Material Handling Europe.

