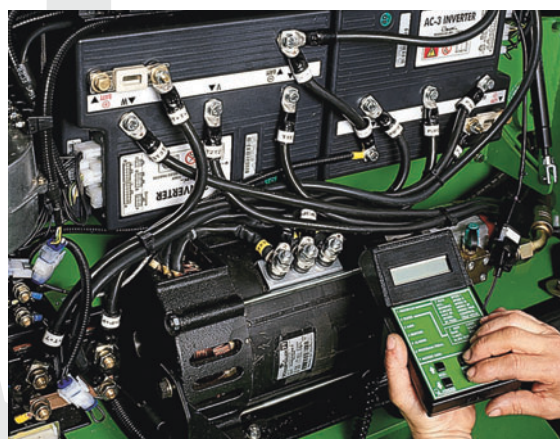




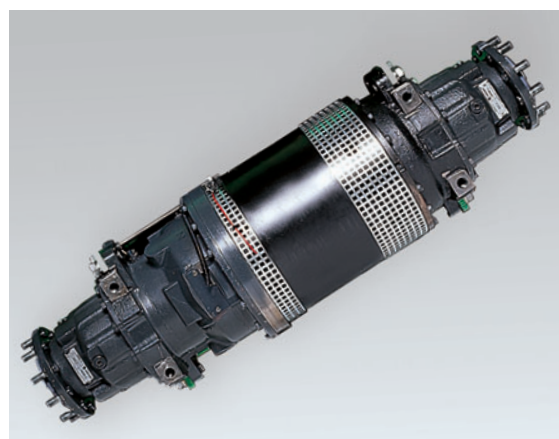
The automobile-style dashboard has main function indicator lights plus warning signals for operating faults and major component wear.



Excellent access to electronic controller – located in a dust-proof housing – and motors. All functions are programmable and the diagnostics simple and easy.



The ergonomic cab features the highest standards in operator comfort, safety and ease of access. The proportional electronic controls integrated in the new (optional) armrest enable the operator to manage all the hydraulic functions by simply moving the Mini-Joystick or Fingertips levers.



The asynchronous drive motor with internal transmission shaft, oil immersed brakes, reduction gears and differential form a compact and solid single unit integrated with the front axle.

At Your Local Dealer

Options

Electronic Fingertips / Mini-Joystick controls fitted on the armrest.
Foldable armrests to further increase the comfort and ergonomomy of the driver.
Pedal drive control.
Complete cab with or without heating.
Working lights.
Twin wheels.

Cesab Ltd:

Unit 6, Bevan Way, Smethwick, Warley, West Midlands, B66 1BZ
Tel. +44 (0) 121 5556116 - Fax +44 (0) 121 5650414
e-mail: sales@cesab.net

Cesab Carrelli Elevatori Spa

Via Persicetana Vecchia, 10 - 40132 Bologna (Italy)
Tel. +39 051 20.54.11 - Fax +39 051 72.80.07
website: www.cesab.it - e-mail: cesab@cesab.it



Blitz 250 300 350

The CESAB BLITZ 250 300 350 AC Technology, combines high manoeuvrability - even in confined spaces - with the advantages of the AC technology. The agility of this truck is enhanced by electronic control of all functions, making BLITZ a high performance fork lift for high productivity. The range comprises models from 2500 to 3500 Kg and lifting capacity up to 6800 mm.

AC Technology means exceptional performance levels, combined with reduced energy consumption. The CAN-BUS simplifies the electrical system by reducing wiring and increases the flexibility of the truck control system.

Various drive programmes can be selected by simply pressing the push-buttons on the steering column. The operator can choose between three different drive programmes: L (low) - H (high) and P (programmable) as well as an additional reduced speed setting.

The driver's module is fully suspended on silent blocks to minimize vibrations and maximize the operator's comfort.

High visibility and stability. The position of the uprights, which are widely spaced, guarantees excellent visibility and at the same time gives a rigid structure even at great height. Equipped with integrated sideshift as standard.

The steering wheel is fully adjustable in height/angle. The foldable release lever of the parking brake is located on the steering column beneath the steering wheel. The comfortable adjustable full suspension seat is equipped with inertia safety belt as standard.

The use of oil wet brakes not only ensures effective braking, but also allows a significant reduction in maintenance costs.

Four wheels electric counterbalanced trucks
from 2500 to 3500 Kg

AC Technology.
Excellent performance on loading ramps
and responsive control of all functions

Narrow aisle width

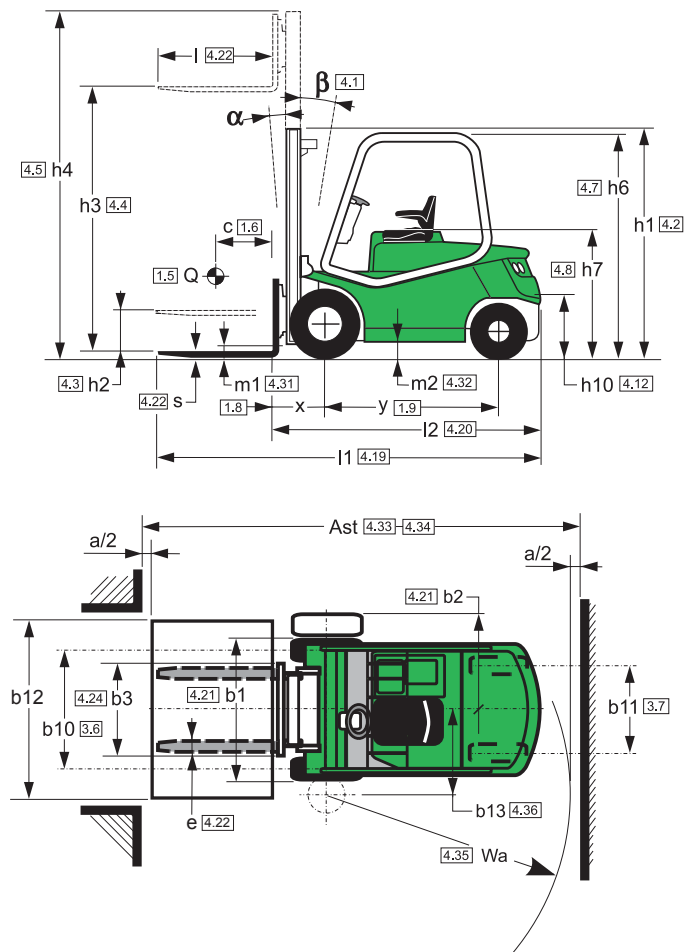


VDI 2198

Characteristics	1.1	Manufacturer	CESAB	CESAB	CESAB	CESAB	CESAB
	1.2	Model designation	BLITZ 250	BLITZ 300	BLITZ 300L	BLITZ 350	BLITZ 350
	1.3	Power unit: electric (battery), diesel, petrol, LPG	electric	electric	electric	electric	electric
	1.4	Operation: manual, pedestrian, stand-on, driver seated	driver seated	driver seated	driver seated	driver seated	driver seated
	1.5	Load capacity Q (kg)	2500	3000	3000	3300	3500
	1.6	Load centre c (mm)	500	500	500	500	500
	1.8	Axle centre to fork face x (mm)	430 (a)	435 (a)	435 (a)	435 (a)	448 (a)
	1.9	Wheel-base y (mm)	1555	1555	1699	1699	1699
Weights	2.1	Weight kg	4770 (b)	5100 (b)	5150 (b)	5350 (b)	5660 (b)
	2.2	Axle load with load, front/rear kg	6520 / 750 (b)	7300 / 800 (b)	7250 / 900 (b)	7650 / 1000 (b)	8290 / 870 (b)
	2.3	Axle load without load, front/rear kg	2450 / 2320 (b)	2445 / 2655 (b)	2500 / 2650 (b)	2475 / 2875 (b)	2760 / 2900 (b)
Wheels and chassis	3.1	Tyres: C=Cushion, SE=Superelastic, PN=Pneumatic, TW=Twin	C - SE - PN - SE.TW	C - SE - PN - SE.TW (c)	C - SE - PN - SE.TW (c)	SE - SE.TW	C
	3.2	Tyre size, front	559x229 - 23x9-10 - 23x9-10 - 6.50-10	559x229 - 23x10-12 - 23x10-12 - 6.50-10	559x229 - 23x10-12 - 23x10-12 - 6.50-10	23x10-12 - 6.50-10	559x254
	3.3	Tyre size, rear	457x152 - 18x7-8 - 18x7-8 - NO	457x152 - 18x7-8 - 18x7-8 - NO	457x152 - 18x7-8 - 18x7-8 - NO	18x7-8 - NO	457x152
	3.5	Wheels, number front/rear (x = driven)	2x - 4x / 2	2x - 4x / 2	2x - 4x / 2	2x - 4x / 2	2x / 2
	3.6	Track width, front b10 (mm)	960 - 980 - 980 - 1152	960 - 942 - 942 - 1152	960 - 942 - 942 - 1152	942 - 1152	973
	3.7	Track width, rear b11 (mm)	940	940	940	940	940
Dimensions	4.1	Mast tilt, forward/backward α / β (degrees)	2°30' / 10°	2°30' / 10°	2°30' / 10°	2°30' / 10°	2°30' / 10°
	4.2	Height of mast, lowered h1 (mm)	2252	2252	2252	2252	2252
	4.3	Free lift h2 (mm)	100	100	100	100	100
	4.4	Lift height h3 (mm)	3160	3160	3160	3160	3160
	4.5	Height of mast, extended h4 (mm)	3805	3833	3833	3833	3838
	4.7	Height of overhead guard h6 (mm)	2145	2145	2190	2190	2190
	4.8	Height of driver's seat h7 (mm)	1090	1090	1090	1090	1090
	4.12	Towing coupling height h10 (mm)	327	327	327	327	327
	4.19	Overall length l1 (mm)	3265 (a)	3340 (a)	3415 (a)	3485 (a)	3498 (a)
	4.20	Length to fork face l2 (mm)	2265 (a)	2340 (a)	2415 (a)	2485 (a)	2498 (a)
	4.21	Overall width b1/b2 (mm)	1190 - 1190 - 1190 / 1530	1190 - 1190 - 1190 / 1530	1190 - 1190 - 1190 / 1530	1190 / 1530	1227 / NO
	4.22	Fork dimensions s/e/l (mm)	40 x 130 x 1000	45 x 130 x 1000	45 x 130 x 1000	45 x 130 x 1000	50 x 150 x 1000
	4.23	Fork carriage to DIN 15173, class/form A, B	II A	III A	III A	III A	III A
	4.24	Width of fork carriage b3 (mm)	1000	1100	1100	1100	1100
	4.31	Floor clearance, mast (with load) m1 (mm)	140	140	140	140	140
	4.32	Floor clearance, centre of wheel-base (with load) m2 (mm)	122	122	122	122	122
	4.33	Aisle width with pallets 1000 x 1200 across forks Ast (mm)	3607	3673	3757	3819	3832
	4.34	Aisle width with pallets 800 x 1200 along forks Ast (mm)	3807	3873	3957	4019	4032
4.35	Turning radius Wa (mm)	1977	2038	2122	2184	2184	
4.36	Minimum distance between the centres of rotation b13 (mm)	—	—	—	—	—	
Performance	5.1	Travel speed, with/without load km/h	17 / 17	17 / 17	17 / 17	17 / 17	17 / 17
	5.2	Lifting speed, with/without load m/s	0.34 / 0.50	0.32 / 0.50	0.32 / 0.50	0.31 / 0.50	0.30 / 0.47
	5.3	Lowering speed, with/without load m/s	< 0.60	< 0.60	< 0.60	< 0.60	< 0.60
	5.5	Tractive force, with/without load N	2000 / 3400	1840 / 2840	1810 / 2830	1810 / 2830	1640 / 2740
	5.6	Maximum tractive force, with/without load, S2 5 minute rating N	10922 / 11858	10793 / 11793	10773 / 11784	10773 / 11784	10600 / 11700
	5.7	Climbing ability, with/without load, S2 30 minute rating %	6 / 10	5 / 9	5 / 9	5 / 9	4.2 / 8
	5.8	Maximum climbing ability, with/without load, S2 5 minute rating %	17 / 28	14 / 24	14 / 24	14 / 24	12.4 / 21.7
	5.9	Acceleration time, with/without load s	—	—	—	—	—
	5.10	Service brake: mechanical / hydraulic / electric / pneumatic	hydraulic	hydraulic	hydraulic	hydraulic	hydraulic
	Electric motor	6.1	Drive motor, S2 60 minute rating kW	14	14	14	14
6.2		Lift motor, S3 15% rating kW	14	14	20	20	20
6.3		Battery according to DIN 43531/35/36 A, B, C, NO	DIN 43536	DIN 43536	DIN 43536	DIN 43536	DIN 43536
6.4		Battery voltage/rated capacity (5 h) V/Ah	80 / 500 - 620	80 / 500 - 620	80 / 625 - 775	80 / 625 - 775	80 / 625 - 775
6.5		Battery weight kg	1547	1547	1872	1872	1872
6.6		Energy consumption in acc. with VDI-cycle kWh/h	—	—	—	—	—
Others		8.1	Type of drive control	AC MOSFET	AC MOSFET	AC MOSFET	AC MOSFET
	8.2	Working pressure for attachments bar	130	130	130	130	130
	8.3	Oil flow for attachments l/min	—	—	—	—	—
	8.4	Noise level at driver's ear dB (A)	—	—	—	—	—
	8.5	Towing coupling, design/type DIN	—	—	—	—	—

(a) with sideshift = + 36 mm (b) with sideshift (c) PN only Michelin Radial

NOTES: Unless otherwise specified, all data refer to vehicles with SE tyres. All performance figures refer to fully run-in vehicles, in perfect working order with homologated tyres mix, battery fully charged and excellent conditions with closed circuit voltage equal to nominal value. Truck performance and dimensions are nominal and subject to tolerances.



	Masts specifications (2500 Kg)							
Mast,	mm	Duplex				Duplex FFL		
h3	Lift height	3160	3660	4160	4960	2930	3160	
h1	Height of mast, lowered	2252	2502	2752	3202	2132	2252	
h2	Free lift	100	100	100	100	1437	1557	
h4	Height of mast, extended	3805	4305	4805	5632	3625	3855	
α / β	Mast tilt, forward/backward	2°30' / 10°				2°30' / 6°		

	Masts specifications (2500 Kg)									
Mast,	mm	Triplex				Triplex FFL				
h3	Lift height	4305	4965	5565	6765	4310	4460	4960	5560	6060
h1	Height of mast, lowered	2132	2352	2552	3052	2132	2182	2352	2552	2752
h2	Free lift	45	45	45	45	1437	1487	1657	1857	2057
h4	Height of mast, extended	4972	5632	6232	7532	5005	5155	5655	6255	6755
α / β	Mast tilt, forward/backward	2°30' / 6°				2°30' / 8°				

	Masts specifications (3000 - 3500 Kg)						
Mast,	mm	Duplex				Duplex FFL	
h3	Lift height	3160	3660	4160	4960	2930	3160
h1	Height of mast, lowered	2252	2502	2752	3202	2132	2252
h2	Free lift	100	100	100	100	1436	1556
h4	Height of mast, extended (*)	3833	4333	4833	5633	3626	3856
α / β	Mast tilt, forward/backward	2°30' / 10°				2°30' / 6°	

	Masts specifications (3000 - 3500 Kg)									
Mast,	mm	Triplex				Triplex FFL				
h3	Lift height	4305	4965	5565	6765	4310	4460	4960	5560	6060
h1	Height of mast, lowered	2132	2352	2552	3052	2132	2182	2352	2552	2752
h2	Free lift	45	45	45	45	1436	1486	1656	1856	2056
h4	Height of mast, extended (*)	4978	5638	6238	7532	5006	5156	5656	6256	6756
α / β	Mast tilt, forward/backward	2°30' / 6°				2°30' / 8°				
(*) BLITZ 350 with C Tyres: h4 + 5 mm										